

Contents

Editorial by Mick Ridley and James Read	2
Letters to the Editors	3
Meppershall Village Hall	4
August & September Activities in our Village Hall	5
Meppershall Autumn Clean Up.....	6
The Sugar Loaf: Beginning a New Era by Andrew Pain.....	7
Meppershall Village Hall Presents.....	8
VE Day – A Call to all Meppershall Residents and Organisations	9
Family Fun Food & Film! Meppershall.....	10
Meppershall Scarecrow Festival 2019	11
Parish Church of St Mary The Virgin (Church of England)	13
Church Services and Events – August 2019.....	16
Church Services and Events – September 2019.....	16
The Wind in the Willows Comes to Meppershall	18
Meppershall Academy by Caroline Sledge.....	20
Brownies by Suzanne Brightwell.....	21
Meppershall Pre-School	22
Can you Help? (Your village magazine needs you!)	23
Meppershall Social Club by Lisa Frost.....	24
Meppershall Charity Quiz	26
The Meppershall Players at S.T.M.A	26
GNOMES (Meppershall Good Neighbour Group)	27
Trugs & Trowels – Campton Gardening Club	27
Shefford Leisure Group by Enid Pamment.....	28
Birthday Greetings.....	31
In Memoriam.....	31
Crime Prevention – Stay Bike Safe	32
Lyme Disease – Safety Alert	33
Wanderbus – Timetable	34
Wanderbus – Call for Volunteer Drivers.....	35
Financial Matters by Paul Savuto	36
Shefford Craft and Produce Show	39
Let's Hear It For The Advertisers!.....	39
Macmillan Cancer Village Support Group.....	40
Clophill Heritage Trust.....	41
Summerfield Miniature Railway	43
The Team.....	44

Editorial by Mick Ridley and James Read

You have in your hands the double summer edition of the Meppershall Messenger. In its pages you will find a cornucopia of news and activities that make Meppershall such a thriving community.



This edition also represents a well-earned break for the Messenger team; a team that is made up of a broad spectrum of people across the village and beyond. These unsung heroes look after the printing, collation, distribution and selling of advertising (the money from our advertisers makes this all possible) and the editors want to extend our heartfelt thanks to each and every one of them for making it possible. If you would like to help whether that be through contributing an article, advertising your business or any of the other jobs that go towards putting the Messenger together then please drop us a line at mepp.messenger@gmail.com.

As Meppershall changes over the years there are still some constants in the village. One of those is pictured on the front cover. Roger's Bakery has been serving delicious bread, cakes and other tasty treats since 1983 and it is a popular stop off on the way back for many children at the school. The bakery has been involved in many village events and supportive of various organisations over the years – the baking of the Harvest loaf with the youngest children at the school is a particular highlight.

One other constant is the Sugar Loaf. Our last pub in the village has been serving beer to the thirsty residents of Meppershall since 1870 and was at the heart of a battle to save it from closure 2 years ago. We are delighted to see that its new tenants have given the pub a much-needed spruce up and we report in more detail on page 7.

These two businesses and all the events and activities within Meppershall highlight why choosing to live in a village is not just about where you sleep. It is about getting involved with all the groups and supporting businesses in the village that provide employment and services to us all. If they are gone it would mean not just not being able to pick up a loaf of bread or having a pint of beer but losing focal points within the community to meet, exchange news and be part of something that is so much more than a bunch of houses on top of a hill with a road through the middle. So please continue to support all of the businesses in our village!

We wish you all a wonderful summer and look forward to producing the October edition with news of the Family Fun Food & Film! Meppershall on the 7th September.

Letters to the Editors

Dear Editors

There has been some concern in the village that Teddy Bear Abseiling may not be possible this summer due to the ongoing measures being taken to keep safe and repair the uniquely historic church tower here in Meppershall.

We will be doing our best to incorporate Teddy Bear Abseiling into the upcoming St Mary's Church Gift Day on Sunday 22nd September, 2-5pm – but please remember that the Scarecrow Festival results will also be announced at 4.30pm as part of the proceedings and stalls from local village organisations will also be present along with the widely acclaimed St Mary's Afternoon Teas.

We plan to announce final arrangements nearer the time. Come and enjoy St Mary's and all it has to offer on Sunday 22nd September 2019 – but with Teddy Bear Abseiling TBC.

Yours with warm regards (and hopefully a harness for your teddy), everyone at St Mary's.

Dear Editors

How Meppershall is the Best!

Magnificent

Entertaining

Perfect

Peaceful

Enjoyable

Respectful

Safe

Happy

Amazing

Leafy

Lovely

By Amber & Jennifer Ridley



Meppershall Village Hall

The Hall continues to welcome visitors, both new and returning for a wide range of activities.

Some of those activities may operate a different timetable during July and August, so please check with the organisers. In particular, The Walnut Tree Café will be closed from Monday 29th July for 2 weeks, re-opening on Monday 12th August.

The work to improve the acoustics in the Main Hall and Saplings Area has now been completed and, as all those who attended the successful Take That tribute event should be able to confirm, has dramatically improved matters. The Trustees are conscious that this was a significant concern for some potential hirers, so we are pleased that this has now been resolved.

We are having significant interest in bookings for various events, so if you are thinking of booking, please book early to avoid disappointment.

Henlow Amateur Theatrical Society (HATS) are in the process of relocating to the hall and installing lighting and other theatrical equipment. They will be rehearsing on a Monday evening and welcome new members.

The Parish Council are in discussions with Croudace about finishing the playing field and play areas

‘Something For Everyone’ Weekend - 1st, 2nd and 3rd November

1st November is the Miss Jones Jazz Band – a Vintage Evening with invitation to dress in 40s style

The Miss Jones Jazz Band specialise in the sounds of jazz and swing from 1930's-60's, with a slight influence of the old American rhythm and blues. An eclectic mix of vintage music that appeals to all audiences.

2nd November is Shadowplay

This popular Letchworth based indie-rock cover band has established itself as a firm favourite at the Village Hall. Hosted by Meppershall Social Club, this evening with a Halloween and Bonfire theme will be an event free to Social Club members. £5 for Non-members.

3rd November Fireworks

The return of Meppershall Fireworks night with a professional display by Fully Fused Fireworks organised by the Meppershall Events Team.

August & September Activities in our Village Hall



Thank you to everyone for your support and to The Walnut Tree Café & Social Club Bar for allowing us to host these events.

If you haven't already joined us please do come along.

Here is a recap on our latest activities:

Craft Club – our first new club and still our most popular! Bring along any craft you are working on

Wednesdays in the Walnut Tree Café

10am to 12 noon, Weekly

Board Games Nights

Monday Evenings - next date to be confirmed

In the Social Area of the Village Hall

7 to 9 pm

Sit, Stretch & Relax – Ideal for those with limited mobility, all welcome

2nd Tuesday each month in The Walnut Tree Café

10am to 10.40am

Contact Thelma McNairn for more info on 01462 851243.

Book Club.

3rd Tuesday each month in the Walnut Tree Café

10am to 12noon

Music and Dance - with tunes to sing and dance along to

Next date to be confirmed

These activities not for you?

If you would be willing to help organise a group or activity, or perhaps share a skill or give an interesting talk please let us know

Kim Tyler 0795 255 7203 Email - kim@randall-tyler.org.uk

Lorraine Jarvis 07811 865 259. Email - lorraine@familyjarvis.co.uk



Meppershall Autumn Clean Up

Be part of the pick

The Meppershall Autumn Clean Up is a campaign with one simple aim: to bring residents together to clear up the litter that blights our environment.

On Saturday September 14th, starting at 10am we are calling on all Meppershall residents to help improve our village environment and take part in the Meppershall Autumn Clean-up. We aim to collect and safely dispose of litter from our streets and green spaces, recycling as much as possible. All we ask is for 2 -3 hours of your time!

So please get the family involved and join the Meppershall Autumn Clean-up and help us make a stand against litter.

How can you get involved?

- Turn up on the day, or better still sign up to help by emailing lovemeppershall@meppershall.org
- Meet at the Village Hall at 10am on Saturday 14th September for a briefing and to collect supplies
- Spend 2-3 hours collecting and sorting litter
- The Walnut Tree Café will be open for those wanting refreshments.

Event organised and supported by Meppershall Parish Council, Meppershall Village Hall and Social Club working in partnership.

The Sugar Loaf: Beginning a New Era by Andrew Pain

All of the villagers who fought so long and hard to keep the Sugar Loaf open were vindicated on Saturday 13th July when it re-opened under new management, with an enhanced outside customer area where people could enjoy the free BBQ and a children's play area.

New tables have been installed, along with improved lighting and a garden is planned. Internally, the smaller bar has been turned into a "Games Room", with further improvements planned soon.

New furniture is arriving for the bar/dining area (yes - dining area. Read on!)

The toilets are being refurbished (hooray!).

The main bar will also be revamped and re-modelled over time, making 'The Loaf' an altogether more welcoming place to enjoy a drink and a meal.

Yes, that's right - a meal. Sunday 14th saw the launch of the Sugar Loaf Sunday Roast lunch and dinner menu: ultimately food is planned to be available every day, which is what the village has needed for so long - a pub not just for drinkers, but a family destination.

That's the plan envisaged by the new management team of Tony Harding and Anthony Rosier. With five other pubs and hotels in their portfolio in East London and the East of England, their ideas for the Sugar Loaf have already been proven to work elsewhere, so they are confident that this will be no exception.

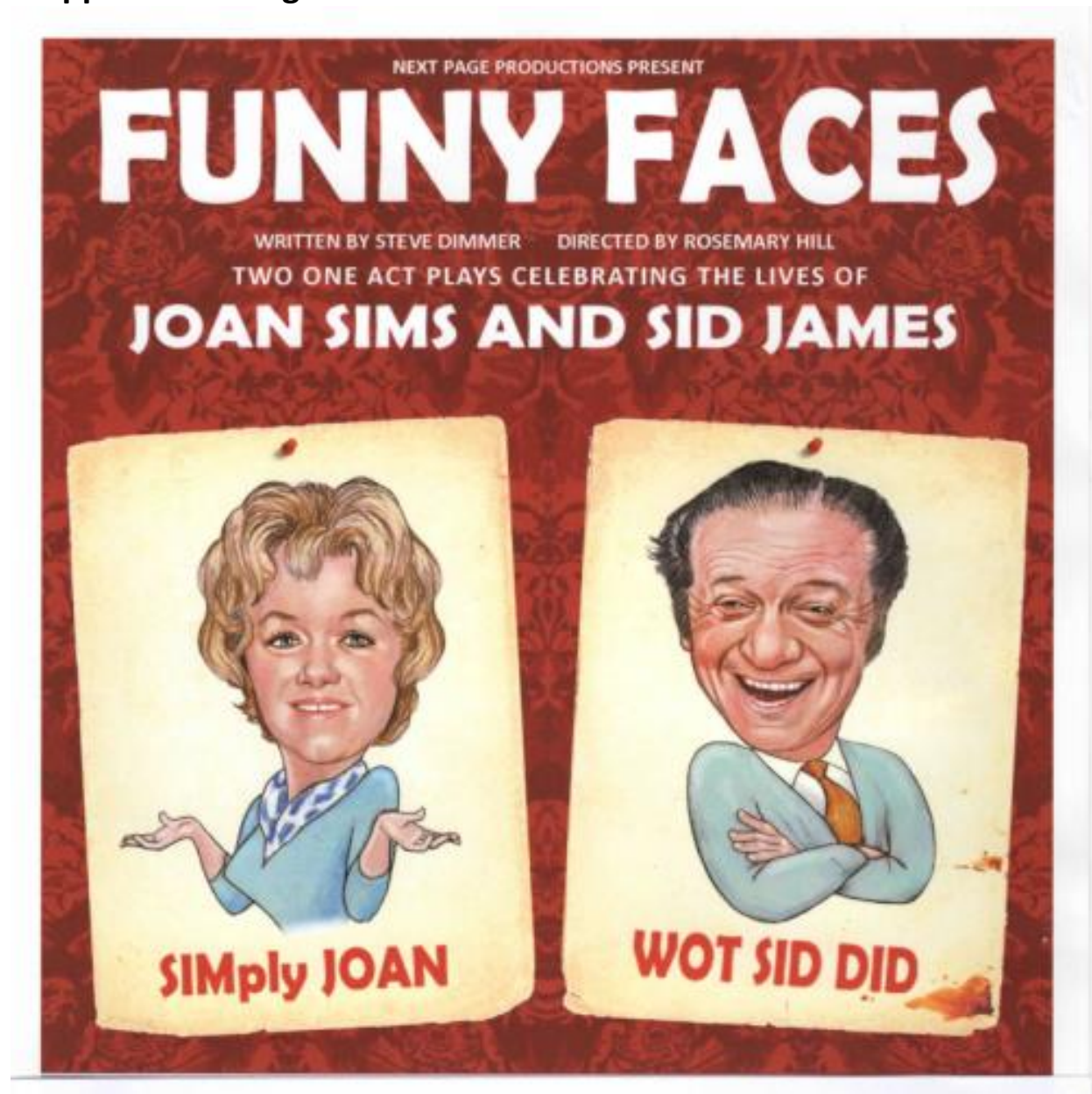


"It's the only pub in the village - if we make it attractive to families AND people who just want a pint, it's bound to succeed, and we WANT it to be a focal point for the village" Tony said.

When the revamp was first "teased" on the village noticeboard, just about the first thing people asked was "Will there be food?" Almost the second thing was "I hope they do Sunday roast!". Well - they do...

It's been a long time coming thanks to the efforts of some very determined villagers, notably Mick Ridley, Graham Jones and Paul Smith, who succeeded in having the pub listed as an Asset of Community Value (ACV). Tony and Anthony and their team means that we still not only HAVE a pub, but we have a BETTER one and it will get better still. Over the next few months 'The Loaf' will undergo quite a transformation, so a big thank you to everyone involved, for your confidence that things could be turned around and the only pub left in Meppershall given a bright future.

Meppershall Village Hall Presents



**A professional touring theatre production of
Funny Faces**

Friday 11th October 2019 7:30 pm

Tickets £10.00 (no concessions) from

www.ticketsource.co.uk/meppershall-village-hall

VE DAY

75TH ANNIVERSARY

A SHARED MOMENT OF CELEBRATION

8 - 10 MAY 2020

Calling all Residents and Meppershall Organisations!

SSAFA, the Armed Forces Charity has outlined plans for VE Day 75, being organised to celebrate and commemorate the 75th anniversary of VE Day. The 8th May 1945 was the day peace emerged after nearly 6 years of war, so the 75th anniversary on 8th May 2020 represents an important milestone in history. The celebrations will cover the weekend of Friday 8th May 2020 to Sunday 10th May 2020 and will be an international celebration of peace - a time to remember, reflect and pay tribute to the millions who played such a vital part in achieving it.

SSAFA planned activities over the weekend are as follows:

- The Playing of Battles O'er & VE 75 Years
- The Nation's Toast to the Heroes of WW2
- The Cry for Peace, around the World
- Churches and Cathedrals ringing out for peace
- Street parties and parties in pubs, clubs, on village greens and in hall etc
- Services of commemoration and celebrations in churches, including the reading of the Tribute to the Millions and the playing of the Last Post

So why am I contacting you all?

I am sure you will agree that residents and organisations of Meppershall cannot let this day pass without reflecting on the enormous sacrifice, courage and determination of people from all walks of life and celebrating the same. Meppershall Parish Council is prepared to support organisations in Meppershall in coming together, pooling resources and ideas, to organise joint VE Day 75 celebration events and would facilitate and welcome the forming of an independent committee made up of representatives from your organisations. If you, or someone you know, would like to represent an organisation or a group of residents as part of a celebration committee please let us know and we will endeavour to arrange a kick-off meeting.

Remember - only if we work together and pool our resources and ideas can we make this work for our village.

All those interested, please contact us at lovemeppershall@meppershall.org or on 07930 813808

Alessandra Marabese – Clerk to Parish Council



Family Fun Food & Film! Meppershall

Saturday 7th September

FREE ENTRY

The event will open at 3pm with Stalls, Food, Drink, and Family Entertainment. Inside our new Village Hall our Lifestyle section will offer crafts and quality merchandise.

The event will continue into the evening with a Pop-up Outdoor Cinema showing The Greatest Showman - sing along!

Film, Food & Drink will be available and the popular covers band RF2 will be playing live in the Village Hall.

Stalls are available both outside and within the Lifestyle section inside the Village Hall.

Please contact:

Kim Tyler on 0795 255 7203 kim@randall-tyler.org.uk for more information.

See you there!



OUR BIENNIAL MEPPERSHALL SCARECROW FESTIVAL

SATURDAY 21ST – SUNDAY 29TH SEPTEMBER

PRIZES
WILL BE
AWARDED

ENTRIES
TO BE
RECEIVED
BY 8TH
SEPT

ALL
PROCEEDS
GO TO THE
CHURCH

Please join us and take part by entering a scarecrow,
or buying a map to visit all the scarecrows around our village.

Judging will take place on the morning of Saturday 21st 9am onwards
Winners will be announced at St Mary's Church on Sunday 22nd at 4pm

Entry forms and rules can be found in the messenger and by e-mail.
Please contact Dawn Abbatt (01462) 816962 or Michelle Browning (01462) 815988
or e-mail meppershall.sparks@gmail.com for more information



Entries can be from individuals, or families, friends, groups, teams or village organisations, just choose a village house or business to host your scarecrow. If you live outside the village and want to enter please get in touch and we will try and find a site for you. One entry form needs to be returned per entry, all team members can be listed on the form. £5 per entry. Each scarecrow should have a title/name.

All entries should be created and positioned by 9am on Saturday 21st September ready for judging, and displayed until Sunday 29th September 3pm. All scarecrows and resulting mess remain the responsibility of the entrants, all maintenance and clearance should be undertaken by the entrants.

This year again there are no themes or categories for entry, we have selected a diverse panel of judges in both experience and age. Their decision will be final. All sites should be cleared by Sunday evening 29th September.

Please keep all scarecrows respectful and please do not use any inappropriate or offensive images or names. You can use any materials in the composition of your scarecrow but it should feature straw or hay - otherwise it wouldn't be a scarecrow! If you need pointers for where to start there are many scarecrow building tips online.

You can supply your own straw or if you would like you may collect some from outside the church on Sunday 15th September between 12noon and 1pm Please indicate on the form if you would like to collect straw, and send one of your team up to collect.

Lastly, **THANK YOU**, for helping us to continue the Meppershall Scarecrow festival, for joining the fun and helping us to raise funds for St. Mary's church.

JUDGES WILL BE LOOKING FOR:

CREATIVE USE OF STRAW, SENSE OF HUMOUR, APPEARANCE, TITLE.

Any further questions please contact Dawn Abbatt (01462) 816962 or Michelle Browning (01462) 815988 or e-mail meppershall.sparks@gmail.com

Name of Team/individual entering:

Address/site of scarecrow:

I would like to collect straw on: 15/09/16 12noon-1pm YES/NO (Please circle)

Title of Scarecrow:

Please give a contact Name:

Phone Number:

E-mail:

Please return and enclose £5 entry to
 The Rectory or 16 Buxton Close, Meppershall, cash or cheques payable to Meppershall PCC.

Parish Church of St Mary The Virgin (Church of England)

Church Road, off Campton Road, Meppershall

www.stmarysmeppershall.org.uk ✝ facebook.com/stmarysmeppershall



Rector: The Reverend Veronica Goodman

01462 339962 – ronigoodman@gmail.com – usual day off Monday

Churchwardens:

Dawn Abbatt 01462 816962 Chris Valentine 01462 815971

Email: Meppershall.PCC@gmail.com

PCC Secretary:

Anne Parsons 01462 813333 Email: annie10639@gmail.com

Message from St Mary's (this time by Andrew)

Last time I wrote for our fabulous Messenger was in 2017 just back from a Christian conference in Tanzania, the land of my birth.

This time I was part of a Rooted in Jesus team training Christian leaders in Uganda on the DR Congo border. I was in East Ruwenzori Diocese right next door to the recent outbreak of Ebola. It feels significant that I'm writing about Africa again this time too - why?

In 2017 I'd been to Singida in the Diocese of the Rift Valley - the poorest region of Tanzania, very dry and arid where the few cows look skeletal and everywhere is either brown or dusty. I came back wondering how we might help the people there, so brave and joyful although living on less than £1.45 a day (the UN measure of extreme poverty), and with children malnourished. Imagine my surprise when I found out that Dr Sophie Sinclair from St Mary's had volunteered in that diocese's Kilimatinde Hospital for her student medical Elective!

Sophie remembered treating an eight-year-old girl with 20% burns from an open cooking fire. Very basic treatment, simply on a bed without clean sheets, with just a mosquito net, along with everyone else on a ward, unprotected from infection, and not knowing whether she could obtain antibiotics or a drip for her from day to day.

I learned that the hospital was trying to upgrade by building a Burns Unit because with most people off-grid, they were getting children admitted who had been badly burned by paraffin lamps too. Not paraffin lamps as we know them though. These are not safety lanterns. They're Kerosene wick lamps - no glass or metal protection for you - or from fire if they fall over. Kerosene doesn't give off enough light to do school homework or sew clothes by (sunset is around 7pm), and it gives off unhealthy and polluting fumes. And Kerosene, it turns out is really expensive.

Kilimatinde Hospital charity wanted to stop burns at the source, and they had the brilliant idea of a Solar Project to prevent burns by helping households to switch to electricity instead of kerosene. Sadly, back in 2017 the charity wasn't able to muster enough resources for the project. There was no way St Mary's or our village could make enough of a difference to help another village of 350 households in Tanzania in one go - which was what was needed.

Now the good news! I came back from Africa this time, only to discover that a bigger charity, Tearfund, had taken on the project, not only that, but our own Bishop Alan of St Albans had coincidentally (God-incidentally?) picked the project as his Harvest Appeal this year 'Light up Tanzania'. Solar power for Singida was not dead in the water after all.

On my flight, at a stopover at Kigali Airport, the cabin crew announced that plastic carrier bags were illegal in Rwanda, and passengers could take only one into the country, which must be exchanged for a jute or cotton bag for between \$5 and \$50. Then the news came later that Tanzania has made plastic carrier bags illegal too. I arrived home to news of Extinction Rebellion climate-change protests.

These African countries are leading the way on plastic bags. It would be a win-win for us to help them switch to solar electricity ahead of us too. They will leapfrog the in-between step we've had - dirty fossil fuel power stations in the countryside - and we and the planet will all benefit.

Will you join me in supporting Light up Tanzania, the Bishop's Harvest Appeal?

We'd be helping a village in Tanzania of roughly the same size as Meppershall. Their children will be able to study after dark, their Mums and Dads sew, work or catch up on world news, charge their phones, save money on fuel and breathe healthy air in the house, free from the fear of burn accidents or fire.

Please donate at The Rectory or online - google Bishops Harvest Appeal St Albans or visit: www.harvestappeal.org

£75 will help a family buy subsidised Solar, £700 will enable a school installation and teach the students to maintain it. And the whole project will give training and employment to a small team assembling, installing and maintaining the Solar.

Job done!

Thank you and God bless, Andrew and St Mary's Village Church.



Above: Dr Sophie Sinclair with Revd. Andrew Goodman

Below: Revd Andrew Goodman with Rooted in Jesus Team at Entebbe Airport



Church Services and Events – August 2019

At St Mary's unless stated below

Date	Time	Service / Event
Sunday 4 th August 7 th after Trinity	11.00am	Holy Communion, plus Junior Church
Weds 7 th August	10.00am	Holy Communion
Friday 9 th August	9pm	Silent Together Enjoy the presence of God in the tranquillity of the church - 30 mins.
Sunday 11 th August 8 th after Trinity	8.30am 11.00am 2.15pm	Holy Communion Morning Worship – all welcome! SPARKS Set-Up and Commissioning Second Sunday Stroll – meet at the church gate to walk to Hitchin (Market Square). A shade over 6 miles. More info / lift coordination: tel. 857836.
Monday – Thursday 12 – 15 August	10am – 2pm	SPARKS! Our fun Christian holiday club.
Tuesday 13 th August	2-4pm	Rectory Tea - Chat and a cuppa, all welcome
Sunday 18 th August 9 th after Trinity	8.30am 11.00am	Holy Communion SPARKS SERVICE! Everyone welcome.
Weds 21 st August	10.00am	Holy Communion
Saturday 24 th Aug	9.00am (Later)	Celtic Morning Prayer (breakfast from 8ish) Baptism of Harry
Sunday 25 th August 10 th after Trinity	11.00am	Holy Communion, plus Junior Church.
Tuesday 27 th August	2-4pm	Rectory Tea - Chat and a cuppa, all welcome
Weds 28 th August	10.00am	Holy Communion
Saturday 31 st Aug		Baptism of Florence

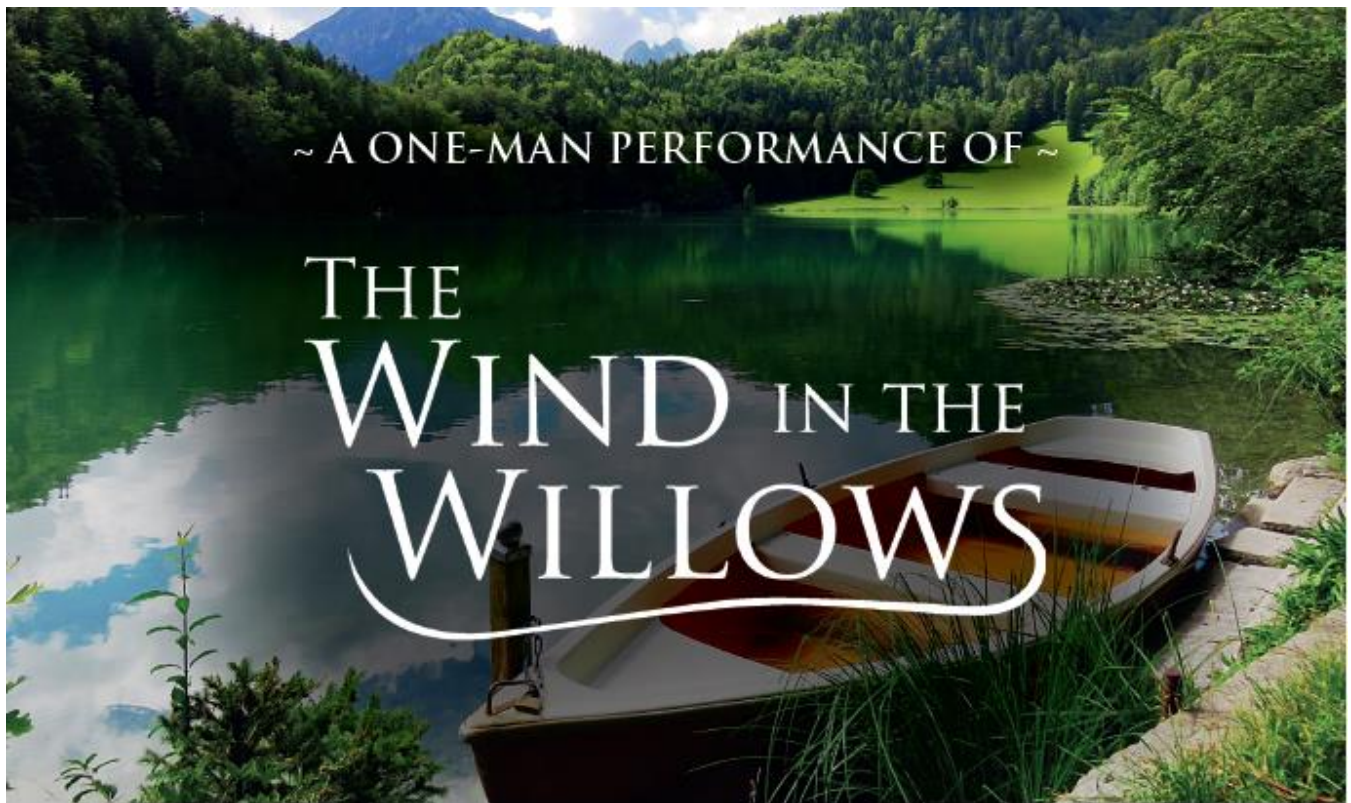
Church Services and Events – September 2019

Date	Time	Service / Event
Sunday 1 st Sept 11 th after Trinity	10.00am 11.00am	Junior Church Breakfast Picnic Party Holy Communion, plus Junior Church

Church Services and Events – September 2019 (continued)

Date	Time	Service / Event
Weds 4 th September	10.00am	Holy Communion
Saturday 7 th Sept		Wedding of Richard and Georgina
Sunday 8 th Sept	8.30am	Holy Communion
12 th after Trinity	11.00am 2.15pm	Morning Worship – all welcome! Second Sunday Stroll – Tea at All Saints Shillington. Meet at the church gate to walk to Shillington for tea at church (2 miles) and returning via River Hit and Cow Bridge (a further 2.5 miles). Back at St Mary's by 5.30pm. More info tel. 857836.
Tuesday 10 th Sept	2-4pm	Rectory Tea - Chat and a cuppa, all welcome
Weds 11 th Sept	10.00am	Holy Communion
Friday 13 th Sept	9pm	Silent Together Enjoy the presence of God in the tranquillity of the church - 30 mins.
Saturday 14 th Sept	10am – 6pm	Bike and Hike in Aid of Beds & Herts Historic Churches Trust. Join our Meppershall team and cycle or walk along with people from across the rest of the two counties to visit some of the beautiful churches in our region. For more info or sponsorship forms call 857836. Always an amazing day out!
Sunday 15 th Sept	8.30am	Holy Communion
13 th after Trinity	11.00am	Morning Worship – All Welcome!
Weds 18 th Sept	10.00am	Holy Communion
Saturday 21 st Sept		Scarecrow Festival Begins
Sunday 22 nd Sept	11.00am	Holy Communion, plus Junior Church.
14 th after Trinity	2-4.30pm	St Mary's Church Gift Day
Tuesday 24 th Sept	2-4pm	Rectory Tea - Chat and a cuppa, all welcome
Weds 25 th Sept	10.00am	Holy Communion
Saturday 28 th Sept	9.00am	Celtic Morning Prayer (breakfast from 8ish)
Sunday 29 th Sept	10.00am	United Benefice Service at St Michael's Shefford
15 th after Trinity	3pm	Wind in the Willows – a one-man reading of a classic rustic tale from Matt Jones of Vintage Verse. At St Mary's.
Weds 31 st July	10.00am	Holy Communion

Please also look out for our summer Churchyard Working Party – our voluntary community tidy-up of the beautiful churchyard. Date not yet confirmed.



AT ST. MARY'S MEPPERSHALL
SUNDAY SEPTEMBER 29TH - 3PM

COME AND ENJOY SOME LATE SUMMER SUN,
SUITABLY BRITISH REFRESHMENTS,
LASHINGS OF GINGER BEER AND THE
DEFINITIVE TALE FROM THE RIVERBANK.

NO TICKETS NEEDED
DONATIONS ONLY



WWW.VINTAGEVERSE.CO.UK



St Mary's Church, Meppershall
Junior Church



Join us for
fun and games

at a
Breakfast Picnic



PARTY!

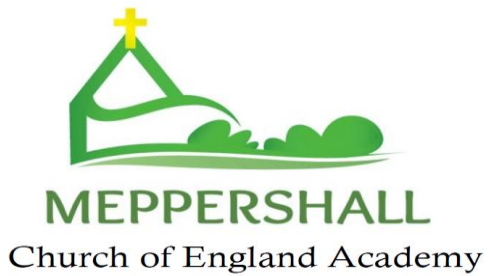
on

Sunday 1 September (10am)

at St Mary's Church

(ages 3 to 12)





Meppershall Academy by Caroline Sledge

As the school year draws to a close, we have begun to look back on our achievements as individuals and as a community. I took great pleasure in reading all the reports and reflecting myself on the changes I had seen in each and every child over the year.

We have also just celebrated maintaining our 96% attendance rate across the year. We have 11 children overall (approx. 10% of our children) who had 100% attendance throughout the year. So, a huge well done to them.

Over the year we have welcomed many new children and families, but sadly we now need to say goodbye to other members of our school family. On Wednesday, the year 4 children filled the church with their memories (and some tears!), as we sang the Leavers' Song and presented them with their own dictionaries and Year Books, generously donated by MAPTA. Rev Roni helped us to think about treasuring our memories. She encouraged us to learn from our mistakes, and then move on. Finally, she suggested we turned our thoughts to what lies ahead. I think that means the chance to step outside of our lives here and experience something new over the summer as we rest, relax and have fun with our families and friends.

Our farewells don't end with those children and families leaving us. This morning in our Farewell worship we said goodbye to our beloved Mrs Gunn, who will be greatly missed. The governors and MAPTA presented gifts on behalf of the school and parents respectively and the children presented cards. We also said a temporary goodbye to Mrs Adams as she starts her maternity leave. We wish her well and look forward to seeing her again, in due course. Happily, we have a full complement of staff to begin the year, and look forward to welcoming new members of staff, Mrs Rogers, Mrs Hindess and Mrs Welch as they begin their new roles in September.

My thanks as always go to the amazing team of staff around me who have supported me in my first year here. Every one of them has made a difference to each child and for that I am extremely grateful. Others have given huge amounts of their time voluntarily to helping me begin to deliver the vision for our school. They are the Governors, MAPTA, Ruth, Keith and Rev Roni from St Mary's Church and our wonderful team of weekly parent and community volunteers. I hope you all feel able to continue helping next year too! But if anyone else would like to get involved in some way, please do see me at the start of term. Finally, I would like to say a huge thank you to our parents and extended families for your welcome, support and partnership over the year. I look forward to continuing to work with you and our new families next year.



By Suzanne Brightwell

We have now finished for the summer and Snowy Owl and Tawny Owl are having a rest before we start again in September.

We all had a fun evening at Boyd Field lighting a fire, though we did need some help from an ex scout. We definitely need to brush up on our fire lighting skills. We cooked bananas with Rolos in tin foil to make caramel chocolate bananas and made tents for the 'Having Adventures Skills Builder' badge. The brownies enjoyed collecting wood for the fire and going on the trim trail.



We had our annual water games evening, which is always a big hit with the brownies and the girls enjoyed getting as wet and making as much noise as allowed.

Finally, for our last meeting of this term we went to Stevenage on the train. When we got there, we went bowling and finished off with a McDonalds before returning back home on the train.

Some of our older brownies are sadly leaving us. We said a sad goodbye to Jessica, Aimee, Chloe and Melissa. We look forward to all our new brownies joining us in September.

If you are interested in your daughter joining Brownies, then please contact Snowy Owl (Suzanne) on 07817 392325 or you can register online at www.girlguiding.org.uk.

We are also always looking for adult helpers, so if you would like to come along and help us then we would love to hear from you.

Meppershall Pre-School

Watch Them Grow



Croudace
HOMES.CO.UK

What a term and what a team. This year we said goodbye to Andrea, but welcomed Kate, Sarah and Tiegan onto our fantastic team. Sadly, we are now saying goodbye to Yvoone, but we know she will always pop back to say hello. Pre-school is all about building up our children to be resilient and therefore helping them adapt to change. At the end of term, we said goodbye and good luck to 22 children, many of whom started at the old pre-school, then moved to the temporary pre-school, and finally to the new pre-school. They have seen two entire buildings disappear before their very eyes. We involved them throughout the changes and although we are very sad to see them disappear, we know we have done our best to get them ready for big school, the next change ahead. Life is full of change for us all, and sometimes even as a practitioner or a parent we need some extra support from those around us. Being kind and helpful makes the world a better place to be. Thank you to everyone involved at pre-school for making this journey together so special.



Many of our children enjoyed our 'Dinky Ducks' party on 17th July, thanks to the wonderful array of soft play equipment from Emma. We then presented our 'Dear Zoo' leavers show on the 19th July which was full of fun and laughter and lots of handmade animal creations.

We always sing all our favourite songs together too, to include the younger children, and this year we also danced to 'You've Got a Friend in Me' from Toy Story, which brought on a few tears around the room. Good luck to all our children starting big school, and we look forward to seeing the rest of you return on 4th September. Have a fantastic summer everyone!

The highly qualified diverse team at Meppershall Pre-school is dedicated to offering the best possible care to all our children by creating a safe and stimulating environment, encompassing all individual needs

We are currently open every weekday from 9am till 3pm and welcome all children from in and around the surrounding areas. (term time only)

We now have spaces for September. Please ring Tamsin on 07816 357159, or email meppershallps@gmail.com, to enrol your child or join our waiting list.

**You can also visit our fantastic new website:
www.meppershallps.co.uk for more information**

OFSTED URN EY551988

Registered Charity: 1031913

Can you Help? (Your village magazine needs you!)

We recently held the 2019 Annual General Meeting of The Meppershall Messenger. Almost 20 people came to review how we are doing, plan for the year ahead and give some ideas and feedback. We are fortunate to have a very lively and successful village magazine at the present time.

But we need more help! Do you have spare time to help print, collate individual copies, make deliveries or contribute writing, marketing, photography or other skills...? We need all of that, and more! Email us at mepp.messenger@gmail.com or see our contact info at the back of this issue. We'd love to meet you! Get involved! It's fun!

Meppershall Social Club by Lisa Frost

If you have recently moved into the village come and check out the Social Club, everyone is welcome. We are open: 5pm - midnight Monday to Friday, 12 noon - midnight Saturday and Sunday.

There are a number of regular events held which include; Bingo on a Friday Night (eyes down at 7.30pm), Barbeques, Quiz Nights - 3rd Sunday of the month, Karaoke, Discos & Vinyl Nights. We have lots of live sporting events coming up on our screens - ask at the bar for further details.

We are fortunate to have a snooker table and a pool table in the games area right near the Social Club Bar. We also have a number of crib and domino players who play in a local league; these are available most weekdays from 5pm, and midday on most weekends.

Still to come in 2019:

DATE	EVENT DETAILS	TIME
17 August	Michael Bublé Tribute – Live music	8pm - close
14 September	Charity Quiz Night – see poster for details	7:30pm - close
21 September	Frankie's Guys – Live music	8pm - close
2 November	Shadowplay - Live indie-rock cover band - they belt out hits from the Kinks to the Killers and everywhere in between – Tickets £5 per person	8pm - close
16 November	Michael Jackson Tribute – Live music	8pm - close
21 December	Soul & Motown – Live Music	8pm - close

Please ask at the bar for more details

MEPPERSHALL CHARITY QUIZ

Hosted by the popular Graham & Jenny

Saturday 14 September 2019



Quiz starts at 7.30pm

Entry - £5 per person, max 6 in a team

Raising money for [PARKINSON'S UK](#)

& [sparks](#)

St Mary's Church, Meppershall

**To reserve your table and tickets
phone Bev Aberdein on (01462)
850541**



The Meppershall Players at S.T.M.A.



The Players would like to say a big THANK YOU to everyone who came to see our summer show "An Evening of Entertainment" at the end of June. Our first show at our new home in Shefford (S.T.M.A.) was well received by our audiences. The Players also very much appreciated the S.T.M.A. rigging the stage up to enable us to hang our black stage curtains for our set.

CINDERELLA PANTO 2019 Read through on Monday 5th August 7.30pm at S.T.M.A. Hall. There are twelve parts up for grabs in this year's pantomime as we put the Players twist on a classic fairy tale, so if you want a preview of this year's Panto come along and read in a character You're not committing yourself to anything and it's a great opportunity to meet the Players' and find out more about us (our main aim is always to entertain our audiences and have fun)

CINDERELLA PANTO 2019 Auditions on Monday 12th August 7.30pm at S.T.M.A. Hall. This is where you get to try out for all the parts you like, then keep your fingers crossed you get the part you want the most. So, all you budding actors & actresses write the date on your calendar and come and try out for CINDERELLA.

Don't forget we now meet at 7.30pm on Monday evenings at the S.T.M.A. and welcome any new members who want to join in the fun of any or all aspects of theatrical performances. If you want to join our merry band of thespians, whether it's on or off the stage, contact Karen on the number below or pop in and see us on Monday evenings 7.30pm - 10pm at the S.T.M.A. Hall (Junior members usually finish at 9pm due to school the next day).

Mon 5th August Cinderella Panto 2019 read through 7.30pm at S.T.M.A. Hall

Mon 12th August Cinderella Panto 2019 auditions 7.30pm at S.T.M.A. Hall

Mon 19th & Mon 26th August No Players (Players Summer Break)

Mon 2nd September Panto rehearsals begin 7.30pm at S.T.M.A. Hall

Fri 29th & Sat 30th November Cinderella Panto 2019 at S.T.M.A. Hall Curtain up 7.30pm

Sat 11th & Sat 18th January 2020 Cinderella Panto Venues T.B.C

You can find the Meppershall Players on Face book (Meppershall Players Community), Instagram and Twitter. The Players meet Monday evenings 7.30pm-10pm at Shefford Town Memorial Hall. Membership is currently free we welcome people to indulge in all areas of theatrical performances, set building, costumes, directing, acting, make-up, song & dance, etc. Interested? We look forward to meeting you.

Karen Mitchell (Players' Secretary) 01462 816336



GNOMES (Meppershall Good Neighbour Group)

The GNOMES invite you to join them at their September Coffee Morning in the Walnut Tree Café in the Village Hall on Thursday 12th at 10:30.

Please note there will be no coffee morning during the month of August. Also, we ask you to visit our stall at the Meppershall Summer Event on 7 Sept and have a go at our lucky 7's challenge.

Any villager wishing to attend a village event who needs transport, well we just might be able to help. Simply call, preferably in good time, 07760 7939921 and ask. Look forward to seeing you there. By the way, our Secretary is retiring so is there anyone out there who would be willing to take on this unpaid but interesting job? Interested? More detail from gnomes.secretary@meppershall.org. You do not have to be GNOME to do this job

Trugs & Trowels – Campton Gardening Club

Our next meetings will be on: -

Monday, 5th August

Competition Evening: - Garden Verse & Poems, together with the judging of the Potato, Beetroot and Onion Competitions.

Monday, 2nd September

Talk by Nic Garner – ‘On the Wild Side’

The place of our gardens in the wider and wilder landscape.

A big Thank You to everyone who opened their gardens in July for the ‘Open Gardens’ and to everyone who attended and made it a great success.

Hope everyone is enjoying the summer months and remember you don't have to be a member to attend our meetings, so why not come along with a friend or neighbour to see what it's all about. We have a ‘Free & Swap’ table for any unwanted plants, tools, pots or anything garden related.

You can also browse through our free library of garden books whilst enjoying a nice cup of tea or coffee and biscuit.

Campton Village Hall, 7.30-9.00pm - Everyone Welcome - Admission £3

For more information, please contact... Maryika 01462 851729

Shefford Leisure Group by Enid Pamment

August - September 2019



Summer is suddenly upon us, school examinations are well behind and holidays are in the forefront of most people's minds, looking forward to long sunny warm days, attending local villages for their summer fairs not forgetting our own of course!

A group of us visited Wisbech Rose Fair. The weather was beautiful for the journey and remained beautiful all day in Wisbech. To see the Norman Church of St. Peter and St. Paul is the main attraction for the annual Wisbech Rose Fair which is one of the finest flower festivals in England. The Rose Fair is also surrounded by a wide variety of stalls selling local produce and cakes, plants and flowers, crafts, gifts and bric-a-brac – and lots more! The church is within a few yards of the historic centre of Wisbech with its shops and bustling market. Everyone was a little tired getting onto the coach but agreed they really had a superb day.

Our next trip out will be 'Vintage Essex' on Sunday 21st July, this really looks like a 'fun trip' with a display of vintage coaches and we will end of the day with a cup of!

In September, a few seats have been purchased for the very popular '9 till 5' Musical which is coming to Milton Keynes Theatre. This will certainly save the hassle of travelling to London. Don't miss out!

Whatever you have planned to do, enjoy! Safe travelling and look after each other. Just enjoy the Summer break,

Enid x

FORTHCOMING EVENTS PLANNED FOR 2019

MANCHESTER – LIVERPOOL Monday 29th July – Friday 2nd August 2019. Our hotel is the Best Western Cresta Court Hotel with en-suite facilities. The hotel is adjacent to the famous Trafford Centre. The holiday includes a Blue Badge Guided coach tour and a cruise the full length of the Manchester Ship Canal plus a visit to Liverpool and Port Sunlight Village. If interested contact me to see what is available.

ANNUAL TRIP TO THE SEASIDE - Sunday 11th August, 2019. Leaving Shefford at 9am. We have planned our annual trip to Hunstanton – so buckets and spades at the ready! Unfortunately, last year this trip was cancelled due to a spate of very bad weather (surprise surprise! Especially after the Summer we experienced!) so hopefully we will have a lovely day out and be able to enjoy the sunshine (and the fish & chips!). We anticipate arriving back to Shefford by 6pm.

RIDGEMONT/WOBURN PARK – Saturday 17TH August 2019. Afternoon buffet tea followed by a ride through Woburn Park Leaving Shefford at 11.30m and will be back to Shefford between 5pm - 6pm. We will be using the Minibus.

STOWE HOUSE & GARDENS – Sunday 8th September 2019. We will leave Shefford at 9am so we arrive at our destination for coffee and a tour of the house & school which can be quite amusing, afterwards we re-board our coach to take us to the gardens which is a National Trust property. There is also a cafeteria and superb grounds. *(All National Trust members, don't forget your cards).*

ELTHAM PALACE & THAMES RIVER CRUISE – Sunday 13th October 2019 – Leaving Shefford at 9am. *(this is an English Heritage Property. Entrance for members is cheaper, so don't forget your English Heritage card).* We will tour the house as an invited guest of the 'Caurtaulds' This house is full of quirky details. After the tour we are off to Greenwich where we can find a 'spot of lunch' before meeting our one-hour cruise taking us to the Thames Barrier taking us past the Docklands and the old Millennium Dome where you can see the vast new developments. You can purchase a 'cuppa' before we get back to Greenwich to re-board our coach for the homeward journey back to Shefford.

BRICK LANE MUSIC HALL – Thursday 7th November – A Wartime Music Hall, which includes a lunch. Brick Lane Music Hall is re-housed in Silvertown and has become synonymous with British music hall. *(This is an event organised by our colleagues Stevenage Group Travel).*

THE ELY CATHEDRAL CHRISTMAS GIFT & FOOD FAIR – Friday 15th November. Now in its seventh year, this popular event is widely acknowledged in one of East Anglia's exceptional shopping experiences. Over 120 bespoke trade stalls are located in the Cathedral's magnificent nave, its famous Lady Chapel and a heated marquee in the beautiful Cathedral grounds. Coach will leave Shefford at 9.30am.

THURSFORD CHRISTMAS SPECTACULAR – **Sunday 17th November** Leaving Shefford at 9am. Will return to Shefford by 9pm. Stopping on route at Elvedon for the outwood journey and a Fish & Chip restaurant on our way home.

CLASSICAL SPECTACULAR – Sunday 24th November – London Philharmonic Orchestra at the Royal Albert Hall. Arena Seats rows B.C.D & E – matinee performance including the 1812 overture.

COCKNEY CHRISTMAS MATINEE – Tuesday 10th December 2019. Leaving Shefford at 9.30am for lunch at 12noon. Held on the Tereza-Joanne in London's Royal Docks (E16 2QY) which includes a Christmas lunch. The coach will leave for homeward bound by 4pm.

JOHN RUTTER'S CHRISTMAS CELEBRATION – **(Matinee)** Wednesday 11th December 2018. Royal Albert Hall - Leaving Shefford approx. 11am.

LONDON SHOWS CURRENTLY AVAILABLE

(organised in conjunction with Stevenage Group Travel) – 2019

Kindly note: Shefford is not a regular pick-up point however arrangements may be made to transport you to either Baldock, Letchworth or Hitchin to collect the coach, this depends solely on how many people require Shefford as a pick up for any particular show.

TINA TURNER – (Evening Performance) Wednesday 28th August. Leaving Shefford at 4.15pm. Aldwych Theatre – Dress Circle Seats – Coach will depart Shefford at 4.15pm.

PHANTOM OF THE OPERA (matinee) – with a 2-course lunch at Planet Hollywood, Thursday 5th September at Her Majesty's Theatre – Stall Seats. Coach will depart Shefford at 9am.

THE BEAUTY OF TCHAIKOVSKY – Wednesday 2nd October 2019 – A sensational new concert, featuring dancers from the Birmingham Royal Ballet at the Royal Albert Hall. Coach leaves Shefford at 4pm.

THE MUSIC OF THE NIGHT – Wednesday 6th November – Hit songs from the most sensational shows. Join many of the West End stars for a dazzling evening of glitz and glamour. The Royal Philharmonic Orchestra at The Royal Albert Hall, Circle Seats. Rows 2 & 3. Coach leaving Shefford at 4.15pm.

WHITE CHRISTMAS – Matinee performance – The musical by Irving Berlin – Thursday 21st November 2019 – Dominion Theatre – Stall Seats – Leaving Shefford at 10.30am.

2020

Shows booked at Milton Keynes Theatre for 2020

THE RED SHOES by Mathew Bourne – Thursday 30th January 2020 – Leaving Shefford at 1pm for 2.30pm performance. Back to Shefford by approximately 6pm

THE KING & I – SATURDAY 7TH March 2020 – Leaving Shefford at 1pm for 2.30pm performance. Back to Shefford by approximately 6pm.

CRUISE ON THE SEINE – 1st April 2020 for one week, with 'Go Cruise'. Full detailed brochure available on request.

RIVERDANCE – Saturday 30th May 2020 – Watch this thrilling energy & passion in the new 25th Anniversary Show composed by Bill Whelan. Leaving Shefford at 1pm for 2.30pm performance. Back to Shefford by approximately 6pm.

Please telephone for prices and availability of any holidays, outings or shows listed above.

Kindly Note: Trips marked with a * have been arranged by Stevenage Group Travel. If there are only a few people booking their trips, so save time on driver's hours their 'regular' pickups are Baldock, Letchworth, Hitchin and Stevenage as sometimes it is

not viable for a coach to come to Shefford first and makes it difficult for driver's hours etc. We do hope you understand.

For all holidays, including transport from Shefford and hotel accommodation, Shefford Leisure Group acts as an agent for the Tour Operator; their terms and conditions apply.

Shefford Leisure Group is open to everyone in the local community, who feel they would like to join us on our ventures and see places they would not see under their own steam. We are always happy to meet new friends.

Raffles are held and all the proceeds are for Keech Hospice Care for Children. For further information regarding dates, prices and availability or to receive our monthly newsletter, please contact me on 01462 851397 or e-mail enid.pamment@gmail.com.

Looking forward to meeting you,

Enid

Birthday Greetings

Everyone at the Messenger sends birthday congratulations in August to...

Joan Barrall who will celebrate her 83rd birthday.

We apologise sincerely to Alan Pritchard for adding 2 years to his age when celebrating his 89th birthday in July!

In Memoriam

It is with greatest sadness that we report the passing away of dear Jose Lane on Tuesday, the 25th June, aged 94.

Her funeral was held at St Mary's on Thursday, the 18th July.

Sincere condolences to Jose's family.



Crime Prevention ADVICE AND INFORMATION



STAY BIKE SAFE

Bicycle Theft in Bedfordshire has decreased in recent years but we would still like to see a further drop in incidents. Just taking a few moments to review your bicycle security and investing in the proper equipment could save you a lot of unnecessary expense and worry.

It doesn't really matter how much you spend on your bike as a cheap one will be missed just as much as an expensive one if this is your usual mode of transport. So please mark it and register it with one of the police recognised schemes and databases.

Also make a note of the frame number, which can usually be found underneath the bottom bracket or on the rear forks. Most of the databases allow you to record other details, such as the make, model, and colour of the



bike and other distinguishing features; all of which is worthwhile

The police do actually recover many thousands of bikes each year, but because very few of them are security marked or registered with an online database very few are returned to the owners. The police usually keep them for 6 weeks, and if not claimed by the owners, they are auctioned with the money raised going to various charities.

Of course, having your bike stolen is not just about the material loss of the bike, it's the inconvenience and added costs associated with it. Not only that, but bike theft is one of the most often stated reasons for giving up cycling, second only to road safety.

Bike security at home

Over half of all bicycle thefts take place on the owner's property, from garages, sheds and gardens. Make sure the place you keep your bike is secure and consider installing a steel loop or fixed anchor point to a wall for locking your bike. If this isn't possible, keep your bike out of sight (even if it's inside the house or flat) so it can't be seen by opportunist thieves.

Here is a checklist of things you can do:

- Always lock your bike if leaving it unattended.
- Choose a place to lock your bike where there are lots of people and a high level of natural surveillance.
- Invest in a good quality lock. D-shaped are usually the best.
- Add your bike to your home contents insurance.
- Lock both the wheel and frame to make your bike more secure.
- Make sure that any quick release and detachable items such as wheels, saddles and lights are either secured or taken with you.
- If your bike is stolen, report it immediately! Visit your local police station or call **101**.
- Register your bike through an approved scheme such as those shown below:

<http://www.immobilise.com/> is a free national registration database for cycles and other personal property.

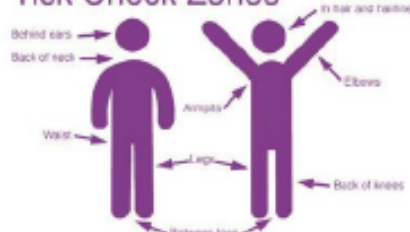
<http://www.bikeregister.com/> call: 01689 862708 offers a variety of affordable registration schemes which also include tamper proof stickers, a cycle marking pack and a transferable ownership log book.

If you suspect someone in your area is trading stolen bikes call **Crimestoppers** on **0800 555 111** or contact your local Trading Standards Office

Whatever type of bike, keep it secure.

SAFETY ALERT

Tick Check Zones



Suspected Case of Lyme Disease.

How did it happen?

During ecology survey work on the A27 Arundel, a colleague recently picked up ticks on their body despite taking precautions. The area is known to contain a high concentration of the insects and this part of the country is considered a 'hot spot' for the provenance of Lyme. Following blood tests for unrelated reasons, their GP noted a high number of white blood cells and after discussions about Lyme exposure decided to commence treatment for suspected Lyme disease.

What are ticks? Ticks are small, spider like blood feeding creatures which can carry several diseases harmful to humans. Ticks live in vegetation & are present across almost all the UK. They are particularly endemic in woodland, heathland areas and areas with livestock, but ticks can also be found in cities and gardens. Ticks are most active March to October and enjoy warm humid climates and habitats.

Should I be concerned? Anyone that works out on site or actively enjoys the outdoors, increases their potential risk of contracting Lyme disease from infected ticks. The prevalence of, and the proportion of infected ticks, as well as positive diagnosis of Lyme's disease is increasing in the UK.

What is Lyme disease? Lyme, and other tick related diseases are caused by a bacterium carried by infected ticks (not all ticks carry harmful diseases) which can be transmitted to people when bitten. Lyme disease complications can range from mild to serious. Lyme disease is very difficult to diagnose, with common false negative blood results, but early antibiotic treatment is vital to prevent spread throughout the body.

Initial symptoms can include:

- A skin rash sometimes shaped as a bullseye, which can expand and move around the body
- Tiredness
- Chills
- Fever
- Headache
- Muscle and joint pain
- Swollen lymph glands
- Blurred vision

If untreated within first few weeks, it can develop into long term debilitating illnesses which are difficult to manage:

- Arthritis
- Nervous system problems
- Paralysis of facial muscles (Bell's palsy)
- Memory problems
- Irregular heart rhythm

DO

- Risk assess Lyme disease for your site visits and plan works accordingly.
- If there is a risk, consider the following:
 - Consult [NHS advice](#) on ticks prior to survey. Wear long-sleeved clothing / long trousers and tuck in clothing to reduce chances of ticks getting to skin
 - Wear light-coloured clothing (e.g. high-viz) so ticks are visible and can be brushed off person before they bite
 - Regularly inspect your clothing during works and brush off ticks to prevent biting
 - Consider using insect repellent on either your cloths or skin to decrease chances of tick bites (observe manufacturer's instructions for use).
 - Avoid moving through dense vegetation where ticks may be present plan work to avoid areas known contain lots of ticks
 - Carry tick removing tools and follow instructions for use when removing ticks
 - Check body carefully each day ASAP after survey (concentrate on Tick Check Zones), consider a 'tick buddy' for difficult to see areas – remove any ticks using tick removal tool and clean area.
- If you are unable to remove ticks, seek immediate medical assistance.
- Record any known bite incidents on your reporting system
- Know the symptoms; if they appear within 3 months after work in a tick area, seek immediate medical advice, tell them your work puts you at risk of contracting Lyme and you want to be treated on that assumption, as per NHS advice (British Infection Association, 2011).

DON'T

- Panic!
- Crush a tick's body or squeeze the body of the tick;
- Apply petroleum jelly, nail polish or any other chemical;
- Attempt to burn a tick off;
- Use fingernails to try and remove a tick;
- Make excuses to avoid seeking medical attention, or
- Disregard any potential symptom – even if you didn't find a tick, but have been in an area at risk – get it checked out!



Why not join our new W5 route through to:

A1 RETAIL PARK – BIGGLESWADE

Nearly two hours to roam through all the shops!

(Also stopping at Asda Superstore, Biggleswade)

2ND & 4TH Friday afternoon of each Month.

Meppershall, New Village Hall	13.38	RR
Meppershall, High St. adj Crackle Hill Rd	13.39	RR
Meppershall, Shefford Rd, All Stops	13.40	RR
Shefford, Ivel Rd, o/s Fire Station	13.42	RR
Shefford, Clifton Rd, opp The Steamer PH	13.44	RR
Shefford, Southfields House	13.45	RR
Clifton, Shefford Rd, opp Post Office	13.48	RR
Clifton, Clifton Park	13.50	RR
Henlow, Clifton Rd, opp The Crown PH	13.55	RR
Henlow, High St, adj Five Bells PH	13.57	RR
Henlow, Langford Rd, adj Newtown	13.58	RR
Langford, o/s Riverside Gardens	14.00	RR
Langford, Station Rd, adj Flexmore Way	14.01	RR
Langford, Church St, All Stops	14.03	RR
Langford, Langford Rd, All Stops	14.04	RR
Biggleswade, Asda Superstore	14.11	16.05
Biggleswade, London Rd, All Stops	14.13	16.02
Biggleswade, A1 London Road Retail Park	14.16	16.00

Service open to all passengers. Cash fares & travel passes accepted.

Timetable Info, Tel: 0300-123-3023

E: thewanderbus@gmail.com

www.wanderbus.org.uk



CAN YOU SPARE JUST 1 MORNING PER MONTH?

We are looking for **VOLUNTEER DRIVERS** to help us operate our 16-Seater Community Bus Services providing essential services to Shefford/Stotfold and all surrounding villages.

What Do We Do?

- We are totally volunteer-run and based in Meppershall, we provide fixed route bus services, mainly weekday mornings, that take approximately 4 hours to complete (09.00 – 13.00) with \pm 2 hours spent at the destination
- We go to Bedford, Biggleswade, Hitchin & Letchworth weekly and Milton Keynes, St Neots & Welwyn Garden City on a monthly basis and pick-up in all the surrounding villages where, to our destinations, the contracted bus operators run infrequently or not at all

What Do You Get?

- Great satisfaction in providing this essential service to residents who rely on us to get out and about
- MIDAS training will be given and familiarisation driving on routes – an experienced driver will always accompany you until you feel ready to go solo!
- You will get to know your regular passengers and enjoy helping them

What Do You Need?

- A normal licence with a D1 classification (See the back of your driving licence)
- Age between 25 & 70 – male/female – all are very welcome

Initially we need reserve drivers, called upon to fill gaps due to holidays, sickness etc. and in the future, we will be able to offer you a regular fixed day/route.

So, if you would like to help please call us on 0300-123-3023

Or e-mail your details to thewanderbus@gmail.com



Financial Matters by Paul Savuto

GOAL-BASED INVESTING EXPLAINED

Although it might be tempting to think that investing is just about getting the best possible return on one pot of money, goal-based investing, structuring your investment around your specific financial aims, has become a widely used way of helping people plan their financial futures.

Thinking things through

One of the most significant benefits to a goal-based approach is that it encourages us to think about what we want our money to achieve in a tangible way, across a range of time horizons. No two investors have the same financial aims, and meeting different goals means using a variety of investment strategies.

This approach starts with the investor defining their objectives such as saving for school fees, a child's wedding, a deposit on a home, a comfortable retirement. These goals then become the building blocks of an investment plan. The information gathered is used to define the right level of savings and the most appropriate mix of funds to meet the investor's goals and will also take account of all available annual allowances and employ taxation saving strategies too.

For instance, a retired couple might typically want an income stream now to boost their pension, but also want to invest some of their capital to fund the likelihood of care costs later in life. In this instance, a portfolio can be tailored to meet each specific goal. A younger investor may want to structure their investments to cover school fees from nursery to graduation for their children, whilst at the same time building up a substantial pension pot for retirement.

Gauging your attitude to risk

Being clear about your goals will make it easier for us to tailor your risk profile to different investments. Each goal may have its own risk tolerance and time horizon. Naturally, over time your goals may change as your life and circumstances change, and your attitude to risk may alter too, that's why we always recommend regular reviews.

INVESTMENT JARGON MADE SIMPLE

Commonly used words and phrases in connection with investing can often seem confusing, but the good news is that we are well-versed in providing plain-English explanations of technical terms.

Volatility

You will probably have heard this term quite a lot recently. Volatility refers to the rate at which the price of an investment moves up and down. If the price moves up and down rapidly over a short period, it is described as having high volatility. If the price remains relatively stable, it is said to be a low volatility stock. Investors generally prefer lower volatility.

Asset allocation

This is the process of deciding what proportion of your investment portfolio should be invested in different types of investment.

There are four main categories of assets – cash, equities, bonds and property.

Determining which mix of assets you should hold in your portfolio will depend on personal factors, including your investment time horizon and your attitude to risk. Asset allocation helps to spread risk through diversification, which in simple terms, means not putting all your eggs in one basket.

Index

An index, and there are several, is a combined measure of fluctuating market prices of shares in a selection of companies that have similar characteristics, such as size. Some indices are designed to reflect the overall performance of a particular market, while others follow a specific sector.

So, for example, the FTSE 100 is made up of the UK's 100 largest quoted companies, the FTSE 250 includes the next largest 250 companies, and the FTSE Small Cap includes companies smaller than that. In the US, the Dow Jones Industrial Average consists of 30 large American companies across various sectors.

WHEN WILL YOU RETIRE?

New research has shown that one in 10 workers expects never to be able to afford to stop work and believe they will have to keep on well into their retirement years. This survey also reports that 58% of respondents think they'll need to take on some form of work, in order to supplement their retirement income. Today, many older people are staying on in the workplace, with a record 10.4 million workers aged over 50 still employed.

Retirement should be enjoyed, not endured

Other research has shown that as few as one in three of us expects to have the same standard of living in retirement as we enjoyed during our working lives. This highlights the need for early pension planning, including drawing up a budget that shows you how much income you'll need for a comfortable retirement. With a full State Pension likely to be worth around £8,000, and qualifying ages on the rise, there's clearly the need for extra provision to ensure that you have money available to enjoy life.

HUGE RISE IN PROTECTION POLICY TAKE-UP

If you were unable to work due to accident, injury, sickness or redundancy, you would still need to support yourself and your family financially. Whilst you might have enough savings to tide you over for a short period off work, if it went on for longer, it could be a struggle to meet mortgage costs and other household bills; this is where an income protection policy can really help.

Policies are designed to pay out if you're not able to work and earn money due to illness or injury, and, in some cases, forced unemployment. They can meet the needs of families who want to protect their regular expenditure, homeowners with monthly mortgage payments, self-employed people whose incomes depend on their ability to work, and employees who receive limited or no sick pay from their employers.

More policies taken out

Figures from technology provider Iress, show income protection sales via its software increased 50% in the first quarter of the year, indicating that more and more people are planning for their family's financial future and protecting themselves against life's unexpected and unwelcome events.

DGS are Independent, whole of market and Chartered Financial Advisers. I am also a Chartered Financial Planner with over 20 years financial services experience, so you are in safe hands. For a free review of your current plans and financial situation, please contact me, Paul Savuto, AFPS, Chartered Financial Planner. DGS Independent Financial Advisers Ltd. 07834 499595 or email ps@dgsifa.com, I'll be happy to talk to you and answer any questions you have. FCA 225814.

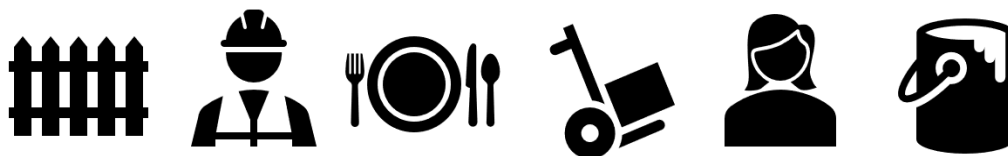
Shefford Craft and Produce Show

Saturday 31st August will see the 39th Show being held in the rooms behind the Methodist Church. Entry forms available from sheffordcps@gmail.com and are due in by Saturday 24th August.

Even if you aren't entering, we would love to see you there during the afternoon. Items on display will range from handicrafts, cookery and photos by both adults and children through to garden produce and floral entries from adults.

Doors open to visitors at 2pm and prizes will be presented at 4pm. Refreshments will be served throughout the afternoon.

Let's Hear It For The Advertisers!



When it comes to looking for good local services, tradespeople and businesses – look first in The Meppershall Messenger. We are proud to carry advertising from a range of local contacts supplying a wide variety of goods and services in our area and **who are often part of the community**. Why not try them out? ***Take a moment NOW to look through the useful ads in the centre section and also in the colour section.***



Meppershall Village Support Group

Informal cancer group for patients, families, friends, carers, in local areas who wish to meet others for peer support & information.

Come along to our meetings on Sat 3rd Aug & 14th Sep 2019 at 11am. Village hall Meppershall.

We'd love to talk to you

Daksha & Phil daksha. trivedi@btconnect.com or 01462 813 943, 07961377526.

MACMILLAN
CANCER SUPPORT



Clophill Heritage Trust

You may not know about our new guests at The Eco Lodges – we have bees! Due the lovely weather throughout June & July, we have been able to harvest our first batch of honey. For those of you who love honey or suffer with hay fever, you can't get honey that's much more local to Clophill than this. We are selling raw, unprocessed honey in jars and also in the comb so if you're interested, please pop by or give us a call to get your honey, while stocks last. Please be aware that the batch is only small as we only harvest a minimal amount so as not to impact the bee's food source.

As many of you know, at The Eco Lodges, we try and have as little impact on the planet as possible – buying local produce, using sustainable energy sources where possible and producing as little waste as we can. We aim to continue to develop our practice to improve even more but thought, in the meantime, we'd start new venture: a blog to promote our ethos of eco living. Our aim is to start a conversation where people can discuss what they do and provide easy answers to improve our impact on the planet. Each month, a new topic is discussed with the aim to cover all aspects of daily life and provide ideas of easy changes and adjustments. Topics range from Travel to Heating and Electricity consumption and food sourcing and consumption; so there's something there for everyone.

	04	Sun Aug	Guided Walk - Medicinal & Edibles Plants
	25	Sun Aug	Sunday Brunch & Teas
	25	Sun Aug	Guided Walk - Medicinal & Edible Plants
	30	Fri Aug	The Battle of Broadway!
	06	Fri Sep	Trails & Tales Walk & Campfire (Adults O...
	07	Sat Sep	Trails & Tales Walk & Campfire (Family ...
	08	Sun Sep	Foraging Walk & Workshop
	15	Sun Sep	Foraging Walk & Workshop
	29	Sun Sep	Sunday Teas

Each blog contains easy to follow ideas and links to websites so making changes can be as simple as possible. Our blogs are posted on our website each month so please do have a read! We'd love to hear your ideas and what you'd like to see us post about.

Next Events: For a full list of events and to book please see www.clophillecolodges.co.uk/events or call us on 07935 911207.

WARDEN ABBEY



The community vineyard

OPEN DAY & WINE SALE

- **Guided Vineyard Tours***
 - **Free self-guided Tours**
 - **Wine Sales and Wine classes***
 - **History Display**
 - **Local Artisan Food and Craft Stalls**
 - **Petting Farm**
 - **Children's activities**
 - **Morris Dancing**
 - **BBQ & refreshments**
- *additional charge for talks and guided tours**

**SUNDAY
8th
SEPTEMBER**

**11 am
until 4 pm**

**£3 entry Adults
Free for children
Free Parking**



We are between Old Warden and Cardington. See website for map, times of tours & tastings.
www.wardenvineyard.org.uk

**"A Bedfordshire
Rural Communities
Charity project"**

Summerfield Miniature Railway
Bedford Model Engineering Society
Off the A600 just past Haynes Turn
Public Running Days in 2019 from 10.30 AM to 4 PM

MARCH	Sunday 31 st	AUGUST	Wednesday 7 th *
APRIL	Wednesday 10 th (half term) *		Wednesday 14 th *
	Sunday 21 st		Sunday 25 th
	Monday 22 nd		Monday 26 th (Bank Holiday)
	Sunday 5 th	SEPTEMBER	Sunday 1 st
MAY	Monday 6 th (Bank Holiday)		Sunday 22 nd
	Sunday 26 th	OCTOBER	Sunday 13 th
	Monday 27 th (Bank Holiday)		Wednesday 23 rd (half term) *
	Wednesday 29 th (half term) *		Sunday 27 th
JUNE	Sunday 9 th	DECEMBER	SANTA SPECIALS
	Sunday 23 rd		PRE-BOOKING ESSENTIAL:
JULY	Sunday 7 th		NB Booking for Santa Specials opens on Sept 1 st and places sell out very quickly For further information on any event, see our website: www.bedfordmes.co.uk
	Sunday 21 st		
	Wednesday 24 th *		
	Wednesday 31 st *		
* On our Wednesday openings, only limited catering will be available.			

The Team

CONTRIBUTIONS

The Editor welcomes contributions to the Messenger, whether as letters, articles or notices. Contributions should preferably be as attachments to e-mail (address below) but handwritten contributions may be sent by post, or left in the folder kept at the Village Stores. Contributions should run to not more than one A5 page (except by prior arrangement) and should be received by the Editor not later than the 12th of the month for publication at the end of that month. Contributions received after the deadline may be held over.

DISCLAIMER

The Editor reserves the right to omit or alter any advertisement or article and to change the content, format or issue date of the magazine without prior notice. The Editor cannot be held responsible for the factual correctness of, or for any libellous comment or statement made in any advertisement, article or other contribution published in this magazine. Every effort will be made to avoid any deliberate attempt to mislead or otherwise cause harm or damage to any person or persons by any advertisement, article or any other contribution published in this magazine.

THE TEAM

Joint Editors	James Read & Mick Ridley	Email: mepp.messenger@gmail.com	
Assistant Editor	Vacancy		
Advertising	Andrew Pain	26 Fildyke Road andrewgpain@hotmail.com	07875 580069
Distribution	Colette House	90 Fildyke Road Email: colettehouse@gmail.com	815585
Production	Enid Pamment	112 High Street Email: enid.pamment@gmail.com	851397
Co-ordination			
Treasurer	John Thompson	16 Brookmead Email: meppershallmessenger@meppershall.org	812983

Collating Dates 2019 - 2020			
October issue	September 30th	February 2020	January 27th
November	October 28th	March 2020	February 24th
December	December 2nd	April 2020	March 30th

Please note that dates in the above table show when collating will take place, at 2.45pm in the Sugar Loaf, for the corresponding month, displayed to the left. The issue being collated usually relates to the following month.