

# Contents

Editorial by Mick Ridley and James Read .....	2
Letters to the Editors .....	3
July Activities in our Village Hall .....	4
Meppershall Village Hall Presents .....	5
JOIN MEPPERSHALL'S AUTUMN CLEAN-UP! .....	6
Parish Church of St Mary The Virgin (Church of England) .....	7
Church Services and Events – July 2019 .....	9
SPARKS 2019 – The Greatest Show On Earth .....	10
Meppershall Academy     by Caroline Sledge .....	11
Brownies by Suzanne Brightwell .....	12
Meppershall Pre-School .....	13
Meppershall Social Club   by Lisa Frost .....	15
THE MEPPERSHALL PLAYERS at S.T.M.A. ....	16
GNOMES (Meppershall Good Neighbour Group) .....	17
Linseed in the Landscape .....	18
Shefford Leisure Group   by Enid Pamment .....	19
Birthday Greetings .....	24
Can you Help? (Your village magazine needs you!) .....	24
Crime Prevention – Vehicle Crime .....	25
Wanderbus .....	26
'TRUGS & TROWELS' Campton Gardening Club .....	27
Financial Matters   by Paul Savuto .....	28
Let's Hear It For The Advertisers! .....	31
Joyce Smith – celebrating her career with The Meppershall Messenger! .....	32
Clophill Heritage Trust Update .....	34
Summerfield Miniature Railway .....	35
The Team .....	36

## Editorial by Mick Ridley and James Read

There can be some subtle differences in how we mark great national anniversaries. Many people recently took time to remember the sequence of events in June 1944 that we call 'D-Day' but it was not until March 1945 that allied forces (significantly the British Army in 'Operation Plunder') secured their crossing of the River



Rhine and hence the opportunity to fully defeat Nazism and eventually restore Germany. So, in a sense, the coming months are an extended, reflective time to remember what that great generation achieved: how hard they fought, for so long.

In terms of *celebrations*, those await us on 8<sup>th</sup> May 2020 as we mark 75 years of Victory-in-Europe (VE) Day. Peace was restored. Fighting in Europe came to an end. So significant is this anniversary, that the government has announced that the normal Early May Bank Holiday will be moved to Friday 8<sup>th</sup> May 2020. A whole weekend of national celebrations will be taking place and Meppershall is sure to play its part in that! We recall the 50<sup>th</sup> anniversary of VE later in this issue.

Meanwhile, there are lots of events coming up in the village. **Saturday 7<sup>th</sup> September** is one of the most important dates for your diary – the revival of a summer fair (Family Fun, Food and Film Day!) with a whole array of stalls, lots of great food, an outdoor cinema for all ages and a live band later in the evening, all centred around the Village Hall. There are opportunities to volunteer to help in all sorts of ways and a huge invitation to come and enjoy the day. In years to come, we all hope to return to the great days of the Meppershall Summer Fair which saw visits from The Red Arrows and the Battle of Britain Memorial Flight, not forgetting the Meppershall Tug of War and Scruffs. Well done to everyone working hard on this year's event.

There are also opportunities for our younger villagers to come together at SPARKS – the legendary Christian holiday club at the church. It runs 12-15 August, for children aged 5 and over. This year, it's The Greatest Show On Earth (see the information later in this issue!)

Why not make time for Meppershall's 'Love Where You Live' autumn clear up, on Saturday 14<sup>th</sup> September? Again, there is information later in this issue and it is a chance to do something great for the village, give something back to the community and meet new friends and neighbours.

Meppershall is about the people who live here – all of us, now. We hope that, like everyone on the Messenger team, you love your village for what it gives you. We also hope that you're inspired to think about what you can give to the village. It might only mean that you try out an event or activity you've never been to... or it might mean getting involved to offer your time and efforts to one of the many fun and friendly clubs or events taking place. Those names listed on the WW2 memorial (inside the church on the south west pillar of the tower) were fighting for the kind of lives and freedoms that we enjoy in villages like ours all across the country. So, let's not wait for VE Day to celebrate that.



## Letters to the Editors

### Dear Editors

The Messenger collating team would like to express our thanks to Jenny at the Sugar Loaf as she moves on to pastures new. The photo below shows Jenny (centre) with (l-r) Beverley, Graham, Jan and Enid at the end of our last collating day at the Sugar Loaf.

With kindest regards, The Meppershall Messenger Collating Team



### Dear Editors

Thanks to all our customers from Meppershall and beyond for making the Walnut Tree Café in the Village Hall such a success. We would like to inform all our loyal and new customers that the Café will be open for the first week of the school summer holidays, then closed for 2 weeks annual leave from Monday 29th July, re-opening on Monday 12th August for the remainder of the holidays.

Thanks and we hope to see you all soon, Karen and Viv

### Dear Editors

A quick plea to anyone trying to sell or develop land in the village. There are people in the village who want to buy parcels of land for their enjoyment or other non-building purposes. Most would be willing to put them beyond the reach of new-build through appropriate Deeds and Covenants etc. Are there 'deals to be done' which could be financially acceptable to the seller, making dreams come true for the buyer and beneficial to mixed land use in the village for the benefit of the community? Maybe the Messenger can support a discussion on this?

(Name supplied)

## July Activities in our Village Hall



Thank you to everyone for your support and to The Walnut Tree Cafe & Social Club Bar for allowing us to host these events.

If you haven't already joined us please do come along.

Here is a recap on our latest activities:

**Craft Club** – our first new club and still our most popular! Bring along any craft you are working on.

**Wednesdays** in the Walnut Tree cafe.

**10am to 12 noon, Weekly.**

**Board Games Nights.**

**Monday Evening 22<sup>nd</sup> July** - in the Social Area of the Village Hall.

**7 to 9 pm.**

**Sit, Stretch & Relax** – Ideal for those with limited mobility, all welcome.

**2<sup>nd</sup> Tuesday** each month in The Walnut Tree Cafe.

**10am to 10.40am.**

Contact Thelma McNairn for more info on 01462 851243.

**Book Club** - Bring along the book you are reading.

**3<sup>rd</sup> Tuesday** each month in the Walnut Tree Cafe.

**10am to 12noon.**

**NEW - Music and Dance** - with tunes to sing and dance along to.

**Tuesday 2<sup>nd</sup> July** in the Walnut Tree Cafe.

**10am to 12 noon.**

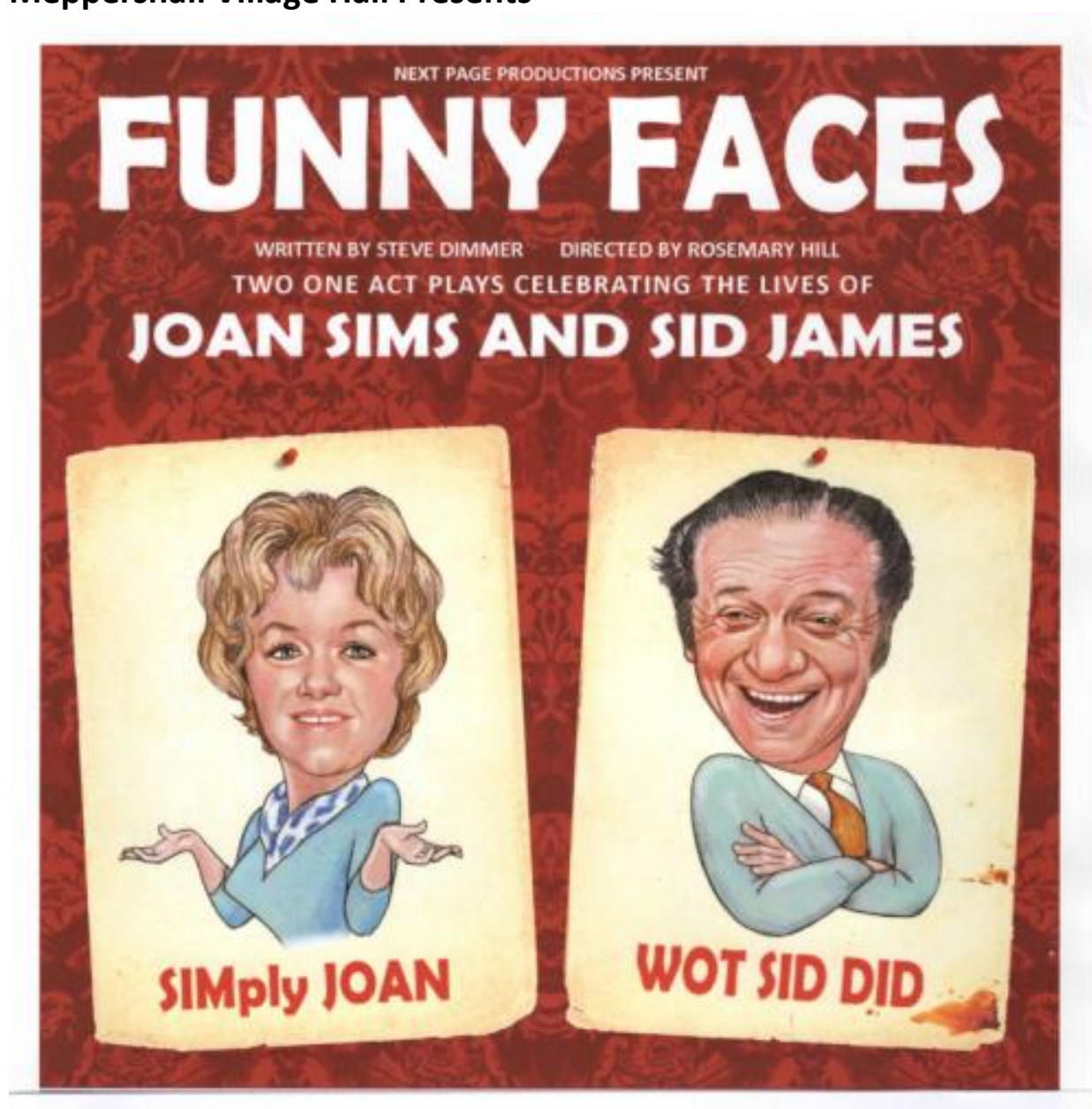
### These activities not for you?

If you would be willing to help organise a group or activity, or perhaps share a skill or give an interesting talk please let us know.

Kim Tyler 0795 255 7203 Email - [kim@randall-tyler.org.uk](mailto:kim@randall-tyler.org.uk)

Lorraine Jarvis 07811 865 259 Email - [lorraine@familyjarvis.co.uk](mailto:lorraine@familyjarvis.co.uk)

Meppershall Village Hall Presents



A professional touring theatre production of Funny  
Faces

Friday 11<sup>th</sup> October 2019 7:30 pm

Tickets £10.00 (no concessions) from

[www.ticketsource.co.uk/meppershall-village-hall](http://www.ticketsource.co.uk/meppershall-village-hall)



## **JOIN MEPPERSHALL'S AUTUMN CLEAN-UP!**

### **Be part of the pick**

The Meppershall Autumn Clean Up is a campaign with one simple aim: to bring residents together to clear up the litter that blights our environment.

On Saturday September 14<sup>th</sup>, starting at 10am we are calling on all Meppershall residents to help improve our village environment and take part in Meppershall's Autumn Clean-up. We aim to collect and safely dispose of litter from our streets and green spaces, recycling as much as possible. All we ask is for 2 -3 hours of your time!

So please get the family involved and join the Meppershall Autumn Clean-up and help us make a stand against litter.

How can you get involved?

- Turn up on the day, or better still sign up to help by emailing [lovemeppershall@meppershall.org](mailto:lovemeppershall@meppershall.org)
- Meet at the Village Hall at 10am on Saturday 14<sup>th</sup> September for a briefing and to collect supplies
- Spend 2-3 hours collecting and sorting litter
- The Walnut Tree Café will be open for those wanting refreshments.

Event organised and supported by Meppershall Parish Council, Meppershall Village Hall and Social Club working in partnership.

## Parish Church of St Mary The Virgin (Church of England)

Church Road, off Campton Road, Meppershall

[www.stmarysmeppershall.org.uk](http://www.stmarysmeppershall.org.uk) ✝ [facebook.com/stmarysmeppershall](https://facebook.com/stmarysmeppershall)



**Rector: The Reverend Veronica Goodman**

01462 339962 – [ronigoodman@gmail.com](mailto:ronigoodman@gmail.com) – usual day off Monday

**Churchwardens:**

Dawn Abbatt 01462 816962 Chris Valentine 01462 815971

Email: [Meppershall.PCC@gmail.com](mailto:Meppershall.PCC@gmail.com)

**PCC Secretary:**

Anne Parsons 01462 813333 Email: [annie10639@gmail.com](mailto:annie10639@gmail.com)

### **Message from St Mary's...**

And so, we reach July and Summer.

The fabrics in the church are turned to green now as we begin our journey through what is called Ordinary Time or the 'Numbered Weeks'. During these weeks, after the excitement of Easter and Ascension and Pentecost, we read again through the life of Jesus, his preaching and teaching and miracles, this year primarily as recorded in the Gospel of Luke. Since we read only in small sections on a Sunday it can be helpful to find time to read through the whole of the Gospel to get a better sense of Luke and his particular message - Luke's Gospel is sometimes thought of as the Gospel to the gentiles, to the poor and to outcasts, and also as the Gospel to women.

You will be pleased to see that SPARKS is running again this year, and my thanks already to all those whose generosity is making this possible - We have such fun! Please pray again for good weather, and for a good and safe time to be had by all. Offers of help are still welcome and there are all kinds of skills needed and all kinds of jobs to be done...

I am pleased to be able to say that I am fully returned to work now and feeling so much better. I'm so grateful to those who have covered for me and who have had to work longer and harder in my absence. Thank you to so many too for their cards and prayers and good wishes. Also, I am so grateful, much as it is struggling rather at the moment, to the NHS for the care I have received - and for my 'remodelling' which has taken so much pain away!

As we look to the summer and the holidays for fun, relaxation, rest and recreation let's not forget to make time for turning again to God as a part of that.



It doesn't have to be long prayer times (although I am not discouraging that) but simply enjoying the beautiful scenery around us, giving thanks for the sunrises and sunsets visible from our village, for the food we see growing in the fields around us - and perhaps for the wonders we see on our travels... Doing all of that with God may bring us closer to Him and bring us the spiritual refreshment, the joy and peace that our busy and sometimes anxious lives can steal from us.

Wishing you a wonderful Summer wherever you spend it.

**With best wishes, Rector Roni**



Thyme flowers under the summer sun in a garden somewhere in Meppershall  
(See it in colour at <https://www.meppershall.org/index.php/messenger>)



**St Mary's Church, Meppershall  
Junior Church (ages 3 to 12)**

Join us on

**Sunday 7 July (11am)  
at St Mary's Church**

## Church Services and Events – July 2019

*At St Mary's unless stated below*

Date	Time	Service / Event
Weds 3 <sup>rd</sup> July	10.00am	Holy Communion
Saturday 6 <sup>th</sup> July	12.30 for 1pm	Bible Society Lunch at New Wellbury Farm. All welcome, for details please phone 816446.
Sunday 7 <sup>th</sup> July 3 <sup>rd</sup> after Trinity	11.00am	Holy Communion, plus Junior Church
Monday 8 <sup>th</sup> July	7.15pm for 7.30 start	<b>Bible Society:</b> God keeps his word. The fall of Jerusalem and exile. Jeremiah chapters 37-39, 40-45 and Lamentations. Jonathan Gorsky, at St Michael's, Shefford.
Tuesday 9 <sup>th</sup> July	2-4pm	<b>Rectory Tea</b> - Chat and a cuppa, all welcome
Weds 10 <sup>th</sup> July	10.00am	Holy Communion
Friday 12 <sup>th</sup> July	9pm	<b>Silent Together</b> Enjoy the presence of God in the tranquillity of the church - 30 mins.
Sunday 14 <sup>th</sup> July 4 <sup>th</sup> after Trinity	8.30am 11.00am 2.15pm	Holy Communion Morning Worship – all welcome! <b>Second Sunday Stroll</b> – meet at the church gate to walk to Clophill - ending at ruined hilltop church of St Mary. A shade over 4 miles. More info / lift coordination: tel. 857836.
Weds 17 <sup>th</sup> July	10.00am	Holy Communion
Sunday 21 <sup>st</sup> July 5 <sup>th</sup> after Trinity  8.30a	8.30am 11.00am  Holy Communion  Holy Communion	Holy Communion Morning Worship – All Welcome!
Tuesday 23 <sup>rd</sup> July	2-4pm	<b>Rectory Tea</b> - Chat and a cuppa, all welcome
Weds 24 <sup>th</sup> June	10.00am	Holy Communion
Saturday 27 <sup>th</sup> July	9.00am	<b>Celtic Morning Prayer</b> (breakfast from 8ish)
Sunday 28 <sup>th</sup> July 6 <sup>th</sup> after Trinity	11.00am	Holy Communion, plus Junior Church.
Weds 31 <sup>st</sup> July	10.00am	Holy Communion

THE GREATEST SHOW

# SPARKS

RETURNS FOR ANOTHER YEAR

OUR FUN CHRISTIAN HOLIDAY CLUB

£14 / DAY

FIRST DAY  
MONDAY  
**12**  
AUGUST

LAST DAY  
THURSDAY  
**15**  
AUGUST

AGES 5+

FROM 10AM \* UNTIL 2PM  
ST MARY'S CHURCH \* MEPPERSHALL

LIMITED PLACES! GET YOUR TICKETS TODAY!

BOOK ONLINE AT: [STMARYSMEPPERSHALL.ORG.UK/SPARKS](http://STMARYSMEPPERSHALL.ORG.UK/SPARKS)



**by Caroline Sledge**

Recently we welcomed the parents of children who will be starting school in September. This significant milestone in a child and parent's life journey, provided an opportunity for me to reflect on our core purpose. What difference will we have made to each child's life by the time they leave us in five years' time? The answer lies in our school vision: At Meppershall Church of England Academy, we aim for academic and personal achievement through:

- helping each child to grow their own potential, in an environment of faith, creativity, aspiration, challenge and celebration;
- equipping each person to make their own unique contribution to the school, community, the wider world and the kingdom of God for the benefit of all.

No small task but that is our job, our challenge and our privilege: to be given the responsibility to influence the future direction, life chances and contribution of each child. Our committed and passionate team of staff, parents and volunteers which make up our community are all focussed on this challenge.

What will the local community, country and world be like in five years' time is hard to say, let alone in ten or twenty-years' time. Perhaps, we are fearful of the future: the political, economic, environmental and social direction in which we are heading. Through what we offer, we hope that our children will develop interest in the world around them, and be passionate, active citizens ready to use their voice to speak up for change.

One such voice is the 16-year old, Swedish schoolgirl and climate activist, Greta Thunberg. Taking inspiration from her, we are encouraging our children to take action for the environment but not by striking. Instead we are planning an Eco Day in July, focussing on steps we can take to reduce the damage done by single-use plastics. We will be joined by a local diver who has seen at first hand the harm being done to marine wildlife. The hope is that this will trigger other questions about our environment which will lead to each child using their voice to take action and make a difference where they can. Watch out for more from the Eco Warriors of Meppershall in the future.





### **By Suzanne Brightwell**

This is Snowy Owl's favourite term, where we get the chance to get out and about in the lighter evenings.

We have been to Rowney Warren woods, where the girls had fun making dens, playing on the swings and ropes and having a picnic.

Our plans to go to Boyd Field to do the fire skills builder activities was scuppered by our traditional English weather, but instead we had an indoor camp evening where the brownies learnt how to put up a tent and melted marshmallows by candlelight and we made smores with chocolate digestives and the melted mallow. We hope to be able to try again to go to Boyd Field next week and light our fire, sing campfire songs and play games in the fields there.

We also have planned a water games evening, which the girls always really enjoy and seem to love to get as wet as they can! Finally, our last out and about evening will be going to Stevenage on the train, bowling and a McDonalds for our end of term trip.

We have also had an Aladdin themed evening, where we made sand art pictures, Princess Jasmine crowns and had magic carpet ride races. We also have a Toy Story themed evening planned, making rockets, Mr Potato Head cookies and making a lucky horseshoe.

If you are interested in your daughter joining Brownies, then please contact Snowy Owl (Suzanne) on 07817 392325 or you can register online at [www.girlguiding.org.uk](http://www.girlguiding.org.uk).

## July Ponderings



June has been a bit wet but a lot of fun. On 7th June we decided to hold our Sports Day inside the main hall instead of at the local nursing home, much to the disappointment of the residents. So, we invited them along to watch. It was great to see so many parents



there too. The children loved all the obstacle courses, and particularly enjoyed the races at the end. We even managed to squeeze in a few parent races! Then we presented every child with a certificate and a medal. This is one of our favourite events of the year. On 15th June we hosted a Father's Day Breakfast at Pre-school, which was also a great success. About 20 families attended and enjoyed a continental or cooked breakfast, and a bit of crafting fun. Thank you to everyone who hosted, and everyone who came!



This term we have been continually improving our provision with new ideas, and more natural and imaginative resources, often donated, as we are starting the transition over to 'In the Moment' planning. This means a completely new approach to learning and setting up our learning environment. The new ethos depends on us as practitioners listening carefully to the ideas of the children and letting them then follow their imagination as independently as possible,

whenever possible. This allows them to explore ideas in greater depth and empowers them to learn more. We provide the right resources and help them manage risk, continually following 'In the Moment' planning within the structure of the day. The more interested they are, the more captivated they are. We are making the biggest changes over the summer holidays and can't wait to follow this voyage of discovery with all our children.

We are now building up to the end of term with our 'Dinky Ducks' party on 17th July, and 'Zoo' themed leavers show on the 19th July. Our last day of term. We will be sad to see 21 families leave us but we wish every child good luck starting at big school. A huge milestone in their life. However, we will be ready to welcome all our families back in September, including lots of new faces. It's set to be the busiest autumn term we have had for many years so please do get in touch if you have a little explorer rearing to go.

**The highly qualified diverse team at Meppershall Pre-school is dedicated to offering the best possible care to all our children by creating a safe and stimulating environment, encompassing all individual needs.**

**We are currently open every weekday from 9am till 3pm and welcome all children from in and around the surrounding areas. (term time only)**

**Many of our sessions this term are full. Please ring Tamsin on:**

**07816 357159**

**or email: [meppershallps@gmail.com](mailto:meppershallps@gmail.com)**

**...to enrol your child or join our waiting list.**

**You can also visit our fantastic new website:**

**[www.meppershallps.co.uk](http://www.meppershallps.co.uk) for more information.**

## **Meppershall Social Club by Lisa Frost**

If you have recently moved into the village come and check out the Social Club, all are welcome. We are open 5pm - midnight weekdays; 12 noon - midnight weekends.

We hold a number of regular events: Bingo, Karaoke, Vinyl Nights and once a month on a Monday evening we are hosting a board games evening, 7-9pm; the next one is 22 July.

Last month our charity fundraising Race Night raised £440 & will be split between our 2 charities Sparks at St Mary's Church in Meppershall and Parkinson's UK.

A huge thank you goes to:- all the sponsors; Vicol Supplies; Xtranet IT Solutions; Maxwells Window Cleaning; Henlow Greyhound Stadium; Lucas Huntley & Co.; Home Improvements by Modplan; Ansell Village Stores; Hertfordshire Timber & Building Supplies and Country Properties; to those who couldn't make it on the night but bought horses and finally to everyone who came along and made it an enjoyable night.

Our next main charity fundraising event is:

### **MEPPERSHALL SOCIAL CLUB QUIZ** **Hosted by the popular Graham & Jenny** **Saturday 14 September 2019**



**Quiz starts at 7.30pm**  
**Entry - £5 per person, max 6 in a team**





## THE MEPPERSHALL PLAYERS at S.T.M.A



The Players' will be at the Shillington Fun Day on the 13<sup>th</sup> July 12-4pm with our playing card tombola. This is our second year at Shillington Fun Day - last year was very windy, so much so that no-one could put up their gazebos! On the upside, after a cloudy start, the sun shone beautifully. Without the gazebo, my skin got a tad red (note to self DON'T forget the sun cream).

It's a fun afternoon out for all the family with a dog show, classic vehicles, bouncy castle, stalls, food, bar, and live music in the evening.

**PLAYERS' A.G.M Monday 15<sup>th</sup> July 7.30pm at the S.T.M.A-**

### **Open to non-members**

This is a great time to come and see what we're about, meet the members and their elected committee – plus find out what our plans are for the coming year.

PANTO 2019: Read-Through - Monday 5<sup>th</sup> August 7.30pm at S.T.M.A, where we will be finding out about Cinderella's rise from rags to riches (and are the ugly sisters really ugly?) Another great opportunity to join the Players' or just find out more about us.

Don't forget we now meet at 7.30pm on Monday evenings at the S.T.M.A. and welcome any new members who want to join in the fun of any or all aspects of theatrical performances.

If you want to join our merry band of thespians - whether it's on or off the stage - contact Karen on the number below or pop in and see us on Monday evenings between 7.30pm-10pm at the S.T.M.A. (Junior members usually finish at 9pm due to School the next day).

### **Dates for your diary:**

Fri 28<sup>th</sup> & Sat 29<sup>th</sup> June Summer Production at S.T.M.A.

Sat 13<sup>th</sup> July Players' at Shillington Fun Day 12-4pm (playing fields, Greenfields off Bury Road)

Mon 15<sup>th</sup> July PLAYERS' A.G.M 7.30pm at S.T.M.A.

Mon 5<sup>th</sup> August Cinderella Panto 2019. Read through 7.30pm at S.T.M.A.

Fri 29<sup>th</sup> & Sat 30<sup>th</sup> November Cinderella Panto 2019 at S.T.M.A.

Sat 11<sup>th</sup> & Sat 18<sup>th</sup> January: 2020 Cinderella Panto - Venues T.B.C

You can find the Meppershall Players on Facebook (Meppershall Players Community), Instagram and Twitter.

The Players meet on Monday evenings, 7.30pm-10pm at Shefford Town Memorial Association Hall (S.T.M.A.) Membership is currently free and we welcome people to indulge in all areas of theatrical performances, set building, costumes, directing, acting, make-up, song & dance, etc. Interested? We look forward to meeting you!

Karen Mitchell (Players' Secretary) 01462 816336

\*\*\*\*\*

### **GNOMES (Meppershall Good Neighbour Group)**



The GNOMES invite you to join them at their July Coffee Morning in the Walnut Tree Café in the Village Hall on Thursday 11<sup>th</sup> July at 10:30.

Everyone is welcome, come along for a social chat. We use it as an opportunity for our volunteers to meet up and get to know each other and catch up on the gossip.

If you would like to join us but have difficulty getting to the village hall, then do please call 07760 793921 and we will see what we can do.

Another date for your diary is 2 days prior to our coffee morning, Tuesday 9<sup>th</sup> at 10am, same venue: The Sit, Stretch and Relax Group run by a GNOME volunteer. It lasts 40 minutes and you will benefit from gentle exercise.

Again, should you wish to attend but have transport problems, please call 07760 793921.

Look forward to seeing you there.

## Linseed in the Landscape

Recently Meppershall Noticeboard (on Facebook) discussed a photo of a beautiful sea of blue flowers, filling almost an entire field down on the road between Campton and Gravenhurst (thanks to Ian Hampton!) Sharp-eyed locals (and the farming family involved) identified it as linseed. The farmer kindly helped us with a bit more information on this beautiful sight, for those wanting to know more.

Linseed is a crop that can be a useful alternative to oil seed rape (OSR – with its characteristic bright yellow flowering fields). OSR is sometimes becoming difficult to grow because it can attract pests such as flea beetles.

Linseed is typically easier to grow than OSR because it is more resistant to pests such as pigeons, slugs and flea beetle. On the field spotted locally, the linseed is a ‘break crop’ from wheat, which is the main crop in the farm’s rotation.

It has been grown on and off in that location for some 20 years, but usually as a spring crop, sown in April. The crop spotted this summer is a winter crop sown in September (standing over the winter and flowering two months earlier).

This winter crop can appear to be a brighter blue colour when in flower than the spring crop. The flowers open early in the morning and then by early afternoon the petals start to drop off. By evening the field is green again. It flowers again the next day – and again each day for about two weeks, depending on the season. It is grown for oil.



Last year that local crop went to France to be crushed and the oil extracted. Its price is usually slightly higher per tonne than OSR but it doesn’t yield as much (you get less overall tonnage of linseed from a similar size of field).

During the war every farm grew a small area of flax (which is the same but with longer straw) and the fibres from the straw (linen) were used to make parachute harnesses. Traditionally linen was used for bedsheets, tablecloths and underwear. The Messenger says a big thank you to Alison Redman and family for the information and insight here.

## Shefford Leisure Group by Enid Pamment

The weather so far this month has been a trifle unpredictable, nice warm days (as June should be) followed by rain which I know is needed, but does it have to be so cold with it?

Never mind – just the English climate! And it has been kind for our early June trips.



At the end of May we visited Chelmer & Blackwater for a 2-hour cruise accompanied with a ploughman's lunch. It was a beautiful day, a lovely stretch of the river with many families walking along the riverbanks enjoying the sunshine, including wildlife on the river. Going through the locks really was interesting and, in some cases, there were three or four locks surrounding us. On our return we walked across the lock gate where our coach was waiting to take us to Maldon. This really is a beautiful and most interesting part of the Essex coastline; we could choose either to walk into town or walk into the beautiful park leading down to a sandy beach. It was a joy to see so many 'buckets and spades' being used and young families enjoying their ice creams and paddling in the water. All too soon it was time to say farewell and make our homeward journey back to Shefford.

Our next trip was the Cotswolds where after an early start from Shefford we met our Blue Badge Guide at Moreton in the Marsh at the head of the Evenlode Valley. This thriving market town has a 1000-year history going back to Saxon times. After a very welcome 'coffee break' we travelled through beautiful landscapes to reach Stow-on-the Wold – where the wind can blow! Then off to Broadway, the Jewel of the Cotswolds with a chocolate box of a High Street lined with horse chestnut trees and a mixture of period houses and picturesque honey colour stone cottages. Plenty of quaint places to choose for lunch. Later we met our Landmark coach with a friendly driver who took us on to Sezincote House and Gardens, which has been seen on BBC's Gardener's World. Sezincote wowed the Prince Regent thus inspiring the Brighton Pavilion which now attracts lots of visitors. We were taken on a tour of the house which is lived in and time was a little short as their visitors were expected to arrive at 4pm and this was around 3.30pm! We were able to view some of the gardens, but by this time the rain had started with a vengeance. This was a shame, but although the day was not the best for weather, it did not stop us enjoying the views until the end of the day.



A small party of us travelled in the Wander Bus to Milton Keynes Theatre to see Les Misérables (matinée performance). The voices and setting were brilliant, very cleverly displayed taking one back in time to the period this was portrayed. There was a standing ovation in the packed theatre by everyone.

On June 12<sup>th</sup> (Wednesday) - Our Shefford Leisure Group's 'Get Together' at the Stondon Golf Club. This event is the only gathering of the year where members and friends are able to meet, enjoy a scrumptious tea, present our cheque to Sarah from Keech Hospice Care for Children. Also, a bumper raffle, some of the prizes have been donated by local shops and businesses in the area. Martin Hay, National Award-winning independent Ocean & River Cruise Specialist was our Guest Speaker and gave a most interesting and informative talk on the difference between Ocean and River cruises. Martin suggested the following river cruise making our way to Paris, joining our cruise ship and cruising on the Seine, visiting the Battlefields which is very much in our minds at this time. Questions were asked and several of our people were interested. Unfortunately, the weather was not as nice as we had hoped, but at least people didn't get wet! Even so the view of the Golf Course and surrounding trees was still stunning from where we were sitting. Everyone agreed it was a lovely sociable afternoon. We will see what July brings! Just hope we get some sunshine!!

Enid x

### **FORTHCOMING EVENTS PLANNED FOR 2019**

**WISBECH ROSE FAIR** – Thursday 4<sup>th</sup> July – Last year the visit to Wisbech Rose Fair proved very popular and everyone really enjoyed their day, so why not join us this year and see what they do to make this event so popular. The coach will leave Shefford at 9am

**CARITAS HARMONY** (The award-winning ladies' choir) is performing a concert at **St Mary's Church, Hitchin** on Sunday 20<sup>th</sup> July 2019 from 7.30 – 9.30pm. The concert is 'Wine, Women & Song' and will be played at the Hitchin Festival of Music. This will be a lovely evening and the cost of the tickets is £10.00 each. (under 12 years free). If you would like to go, please contact me (01462 851397) as soon as possible and I can book your tickets. I can assure you; you will not be disappointed. (Please note I have not booked transport but if you experience difficulty please let me know and I will see what can be arranged).

**VINTAGE ESSEX Sunday 21<sup>st</sup> July 2019** – Leaving Shefford at 9am making our way to Chelmsford. In partnership with Lodges Coaches of High Easter near Chelmsford, we bring Vintage Essex.

A very entertaining new day out for groups who like to see a lot without walking too far! We spend an afternoon at the Lodge HQ in the Essex Rodings. This trip includes morning refreshments and a ploughman's lunch, where you will see the collection of 40s and 50s coaches immaculately restored. They also have 'chitty chitty bang bang (not the flying one)! We will also visit to the chocolate box village of Finchingfield before homeward bound. There will be time for a 'cuppa' before returning home, hopefully by 6.30pm.

**MANCHESTER – LIVERPOOL** Monday 29th July – Friday 2<sup>nd</sup> August 2019. Our hotel is the Best Western Cresta Court Hotel with en-suite facilities. The hotel is adjacent to the famous Trafford Centre. The holiday includes a Blue Badge Guided coach tour and a cruise on the Manchester Ship Canal plus a visit to Liverpool and Port Sunlight Village. Twin rooms still available. For further details please contact Enid.

**ANNUAL TRIP TO THE SEASIDE** - Sunday 11<sup>th</sup> August, 2019. Leaving Shefford at 9am. We have planned our annual trip to Hunstanton – so buckets and spades at the ready! Unfortunately, last year this trip was cancelled due to a spate of very bad weather (surprise, surprise! Especially after the Summer we experienced!) so hopefully we will have a lovely day out and be able to enjoy the sunshine (and the fish & chips!). We anticipate arriving back to Shefford by 6pm.

**RIDGEMONT/WOBURN PARK** – Saturday 17<sup>TH</sup> August 2019. Afternoon buffet tea followed by a ride through Woburn Park Leaving Shefford at 11.30am and will be back to Shefford between 5pm - 6pm. We will be using the Minibus.

**STOWE HOUSE & GARDENS** – Sunday 8<sup>th</sup> September 2019. We will leave Shefford at 9am so we arrive at our destination for coffee and a tour of the house & school which can be quite amusing. Afterwards we re-board our coach to take us to the gardens which is a National Trust property. There is also a cafeteria and superb grounds. *(All National Trust members, don't forget your cards).*

**MILTON KEYNES THEATRE – 9 'TILL 5** – Thursday 26<sup>th</sup> September 2019 – Leaving Shefford at 1pm for 2.30pm performance. Anticipate arriving back to Shefford by 6pm.

**ELTHAM PALACE & THAMES RIVER CRUISE** – Sunday 13<sup>th</sup> October 2019 – Leaving Shefford at 9am. *(this is an English Heritage Property entrance for members cheaper, so don't forget your English Heritage card).* We will tour the house as an invited guest of the Courtaulds. This house is full of quirky details. After the tour we are off to Greenwich where we can find a 'spot of lunch' before

meeting our one-hour cruise taking us to the Thames Barrier taking us past the Docklands and the old Millennium Dome where you can see the vast new developments. You can purchase a 'cuppa' before we get back to Greenwich to re-board our coach for the homeward journey back to Shefford.

**BRICK LANE MUSIC HALL** – Thursday 7<sup>th</sup> November – A Wartime Music Hall, which includes a lunch. Brick Lane Music Hall is re-housed in Silvertown and has become synonymous with British music hall. *(This is an event organised by our colleagues Stevenage Group Travel).*

**THURSFORD CHRISTMAS SPECTACULAR** – Sunday 17<sup>th</sup> November Leaving Shefford at 9am. Will return to Shefford by 9pm. Stopping on route at Elvedon for the outward journey and a Fish & Chip restaurant on our way home.

**CLASSICAL SPECTACULAR** – Sunday 24<sup>th</sup> November – London Philharmonic Orchestra at the Royal Albert Hall. Arena Seats rows B.C.D & E – matinee performance including the 1812 overture.

**COCKNEY CHRISTMAS MATINEE** – Tuesday 10<sup>th</sup> December 2019. Leaving Shefford at 9.30am for lunch at 12noon. Held on the Tereza-Joanne in London's Royal Docks (E16 2QY) which includes a Christmas lunch. The coach will leave for homeward bound by 4pm.

**JOHN RUTTER'S CHRISTMAS CELEBRATION – (Matinee)** Wednesday 11<sup>th</sup> December 2018. Royal Albert Hall - Leaving Shefford at around 11am.

### **LONDON SHOWS CURRENTLY AVAILABLE**

**(organised in conjunction with Stevenage Group Travel) – 2019**

*Kindly note: Shefford is not a regular pick-up point however arrangements may be made to transport you to either Baldock, Letchworth or Hitchin to collect the coach, this depends solely on how many people require Shefford as a pick up for any particular show.*

**THE PLANETS:** Sunday 30<sup>th</sup> June – Royal Philharmonic Orchestra. An HD Odyssey. Gaze in wonder as breath taking NASA images and footage are projected onto a giant screen complementing Holst's awe-inspiring suite. The Planets inspired by the system featuring the much-loved movements *Mars and Jupiter*. Hear other well-known themes, synonymous with outer space including Star Wars. Nick Davies is the Conductor – Royal Albert Hall – Arena or Circle Seats. Coach will leave Shefford at 3pm.

**9 – 5 THE MUSICAL (MATINEE)** – Wednesday 10<sup>th</sup> July 2019. – Dolly Parton’s rollicking musical. Savoy Theatre, Dress Circle seats. Coach leaving Shefford at 10.30am. (*Fully booked, reserve list only*)

**THE BEAUTY OF TCHAIKOVSKY** – Wednesday 2<sup>nd</sup> October 2019 – A sensational new concert, featuring dancers from the Birmingham Royal Ballet at the Royal Albert Hall. Coach leaves Shefford at 4pm.

## **2020**

CRUISE ON THE SEINE – 1<sup>st</sup> April 2020 for one week with ‘Go Cruise’ – Details in July Meppershall Messenger.

### **Shows booked at Milton Keynes Theatre for 2020**

THE RED SHOES by Mathew Bourne – Thursday 30<sup>th</sup> January 2020 – Leaving Shefford at 1pm for 2.30pm performance. Back to Shefford by approximately 6pm

THE KING & I – Saturday 7<sup>TH</sup> March 2020 – Leaving Shefford at 1pm for 2.30pm performance. Back to Shefford by approximately 6pm.

RIVERDANCE – Saturday 30<sup>th</sup> May 2020 – Watch this thrilling energy & passion in the new 25<sup>th</sup> Anniversary Show composed by Bill Whelan. Leaving Shefford at 1pm for 2.30pm performance. Back to Shefford by approximately 6pm.

Please telephone for prices and availability of any holidays, outings or shows listed above.

**Kindly Note: Trips marked with a \* have been arranged by Stevenage Group Travel.**

**If there are only a few people booking their trips, to save time their ‘regular’ pickups are Baldock, Letchworth, Hitchin and Stevenage as sometimes it is not viable for a coach to come to Shefford first and makes it difficult for driver’s hours etc. We do hope you understand.**

For all holidays, including transport from Shefford and hotel accommodation, Shefford Leisure Group acts as an agent for the Tour Operator; their terms and conditions apply.



Shefford Leisure Group is open to everyone in the local community, who feel they would like to join us on our ventures and see places they would not see under their own steam. We are always happy to meet new friends.

Raffles are held and all the proceeds are for Keech Hospice Care for Children. For further information regarding dates, prices and availability or to receive our monthly newsletter, please contact me on 01462 851397 or e-mail [enid.pamment@gmail.com](mailto:enid.pamment@gmail.com).

Looking forward to meeting you,

Enid

### **Birthday Greetings**

Everyone at the Messenger sends birthday congratulations in July to...

**Alan Pritchard** who will be 91

**Margaret Gardner** who will be 84

### **Can you Help? (Your village magazine needs you!)**

We recently held the 2019 Annual General Meeting of The Meppershall Messenger. Almost 20 people came to review how we are doing, plan for the year ahead and give some ideas and feedback. We are fortunate to have a very lively and successful village magazine at the present time.

But we need more help! Do you have spare time to help collate individual copies, make deliveries or contribute writing, marketing, photography or other skills...? We need all of that, and more! Email us at

[mepp.messenger@gmail.com](mailto:mepp.messenger@gmail.com) or see our contact info at the back of this issue. We'd love to meet you! Get involved! It's fun!

T



## Crime Prevention ADVICE AND INFORMATION

### VEHICLE CRIME

#### WHEELS

Alloy wheels are always attractive to a thief because of their high value. You can secure your wheels by using locking wheel nuts. Locking wheel nuts will also prevent the theft of 'run-on-flat' tyres. Cable ties won't prevent your wheel trims from being stolen but they are a good deterrent because they will slow an offender down.

#### INDEX PLATES

Index plates are often stolen to 'disguise' another vehicle in the execution of a crime. You can secure your plates by removing the original screws

and replacing them with clutch-head screws. These are screws that can only be turned clockwise and you need a drill to remove them. Stick-on plates are never a good idea – they can be removed quickly and quietly. Visit [www.secureplate.com](http://www.secureplate.com) for details on tamper-proof index plates. Many garages offer to fit anti-theft plates: please check the product is dvlA-approved and bears the 'Sold Secure' logo. Many non-tested products are proving not to work effectively.

#### LOCKS

If you have a steering wheel lock, then use it. There are many types on the

market; the most popular are the 'thread through' style and the steering wheel shields. Make sure any product bought has the 'Sold Secure' brand of approval. You can also buy locking wheel clamps – these are especially useful if the vehicle is to be left unattended for a long period (eg, while you are on holiday).

There are now a number of strong boxes that have been designed to fit into the boot of a car or the back of a van. These are particularly useful if you need to transport tools or expensive items as part of your work. If you need to transport tools and equipment as part of your job, empty your vehicle every evening. It is also worth having a sign in your vehicle that states no tools are left in it overnight.

#### PROPERTY MARKING

Property marking cannot prevent your goods from being stolen but it is a very good deterrent as it is difficult to sell on stolen property that has been marked. It also allows the police to return recovered stolen goods to their rightful owner. Mark your property with your house/flat number and postcode. If your property has a name, use the first 3 letters instead of the house number. Use a UV pen to invisibly mark items such as mobile phones, audio-visual equipment, cameras, etc. Other products on the market are SmartWater and microdot tagging systems. Consider etching your windows and alloy wheels.

#### ALARMS

Most new cars are fitted with an alarm and immobiliser as standard. However, it is possible to install a higher specification alarm if necessary. These alarms can also be installed in caravans. Please check the alarm you buy has the 'Sold Secure' seal of approval.

#### STEREOS

If you can remove the fascia of your stereo, do so. This is the best way to make your stereo undesirable. You can also secure your stereo by replacing the fixing screws with small gauge clutch-head screws. It makes sense to properly mark your stereo and other in-car gadgets, too.

#### SATELLITE NAVIGATION AND OTHER GPS BASED DEVICES

Some vehicles now have integrated satellite navigation systems but many people buy the stand-alone units that fit to the window on cradle with a plastic sucker pad. If you use one of these items, it is essential you not only remove the device but also the cradle and wipe the sucker ring mark off the glass. Thieves will be looking for tell-tale signs of in-car gadgets as they are small enough to pocket and fetch a good price. Remember to check your insurance details – some home contents policies do not cover satellite navigation systems as they are classed as 'vehicle accessories'.

#### YOUR CAR KEYS

Sometimes houses are burgled specifically to get the keys to a desirable vehicle parked on the drive. When at home, keep your keys out of the line of vision from doors, letter boxes and windows. Don't store them in an obvious place, like a drawer in the hallway table or kitchen, or a hook on the back of the door.

#### PRIVATE PARKING

If you have a garage, clear it out and park the car in it – this will help prevent your car being specifically targeted if it is a desirable make and model. If you own a motorcycle, consider installing a ground anchor and use a sturdy chain and padlock. You can reinforce the security of the garage door by fitting a 'garage defender' – this prevents the up-and-over door from being raised. Garage windows can be obscured with frosted adhesive vinyl – if a burglar can't see in, it reduces the temptation to break in. If you can park on a driveway, consider fitting a fold-down or telescopic post. If you own a caravan or trailer, consider installing a hitchlock and post.

Make sure the area where you park your car is well-lit. If the parking area is on private property, you can use a domestic CCTV system.

Always empty your vehicle of property and remove the stereo fascia when you park up outside your home.

#### PUBLIC CAR PARKS

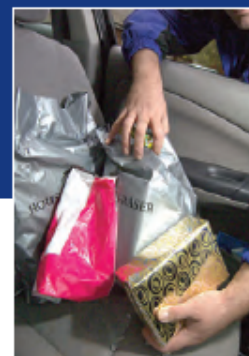
Many multi-storey car parks now have 'Park Mark' status. This means they have been built or refurbished with crime reduction in mind. They will have signage displaying their status at the entrances. However, it is always sensible to remove temptation and clear your vehicle when you park.

#### CATALYTIC CONVERTERS

Chemical etching kits are now available on the market to security mark your catalytic converter, and you can also use an electric etching tool. Whilst Bedfordshire Police cannot promote or endorse any particular product or service, we do have an obligation to make the public aware of emerging crime reduction measures.

For more crime reduction advice, please email [crimereduction@bedfordshire.pnn.police.uk](mailto:crimereduction@bedfordshire.pnn.police.uk)

**Remember to register your property on [www.immobilise.com](http://www.immobilise.com)**





**Why not join our new W5 route through to:**

**A1 RETAIL PARK – BIGGLESWADE**

**Nearly two hours to roam through all the shops!**

**(Also stopping at Asda Superstore, Biggleswade)**

**2<sup>ND</sup> & 4<sup>TH</sup> Friday afternoon of each Month.**

Meppershall, New Village Hall	13.38	RR
Meppershall, High St. adj Crackle Hill Rd	13.39	RR
Meppershall, Shefford Rd, All Stops	13.40	RR
Shefford, Ivel Rd, o/s Fire Station	13.42	RR
Shefford, Clifton Rd, opp The Steamer PH	13.44	RR
Shefford, Southfields House	13.45	RR
Clifton, Shefford Rd, opp Post Office	13.48	RR
Clifton, Clifton Park	13.50	RR
Henlow, Clifton Rd, opp The Crown PH	13.55	RR
Henlow, High St, adj Five Bells PH	13.57	RR
Henlow, Langford Rd, adj Newtown	13.58	RR
Langford, o/s Riverside Gardens	14.00	RR
Langford, Station Rd, adj Flexmore Way	14.01	RR
Langford, Church St, All Stops	14.03	RR
Langford, Langford Rd, All Stops	14.04	RR
<b>Biggleswade, Asda Superstore</b>	<b>14.11</b>	<b>16.05</b>
<b>Biggleswade, London Rd, All Stops</b>	<b>14.13</b>	<b>16.02</b>
<b>Biggleswade, A1 London Road Retail Park</b>	<b>14.16</b>	<b>16.00</b>

**Service open to all passengers. Cash fares & travel passes accepted**

**Timetable Info, Tel: 0300-123-3023**

E: [thewanderbus@gmail.com](mailto:thewanderbus@gmail.com)

[www.wanderbus.org.uk](http://www.wanderbus.org.uk)

## **‘TRUGS & TROWELS’ Campton Gardening Club**

**Our next meeting will be on: -**



**Monday, 1<sup>st</sup> July**

**‘Managing Trees & Shrubs in your Garden’**

**A talk by**

**Colin Carpenter**

**Campton Village Hall**

**7.30-9.00pm**

**Everyone Welcome**

**Admission £3**

On Sunday, 14<sup>th</sup> July we will be holding this year’s...

### **Campton ‘Open Gardens’**

The walkabout will start with Campton Manor; meet outside for 1.30pm start, then carrying on to other gardens within the village afterwards. The afternoon will finish off with a ‘Potluck’ Buffet and Raffle at 28 Greenway, Campton.

You don’t have to be a member to attend, so why not come along with a friend or neighbour to see what it’s all about. We have a ‘Free & Swap’ table for any unwanted plants, tools, pots or anything garden related. You can also browse through our free library of garden books whilst enjoying a nice cup of tea or coffee and biscuit.

**For more information, please contact... Maryika 01462 851729**



## **Financial Matters by Paul Savuto**

### **SAFEGUARDING YOUR WEALTH FOR FUTURE GENERATIONS**

Inheritance Tax (IHT) affects thousands of families every year. It comes at a time of loss and mourning and can have an impact on families with even quite modest assets – if you thought IHT was just for extremely wealthy people to worry about, think again.

### **TACKLING IT SOONER RATHER THAN LATER**

There are legitimate ways to mitigate against IHT, which is why it is sometimes called the ‘voluntary tax’. Unfortunately, some of the most valuable exemptions must be used seven years before your death to be fully effective, so it makes sense to consider ways to tackle IHT sooner rather than later and to seek professional financial advice. As property prices make IHT a reality for many in the UK, we’ve looked at a number of ways to prevent HM Revenue and Customs being one of the largest beneficiaries of your estate. IHT is levied at a fixed rate of 40% on all assets worth more than £325,000 per person (0% under this amount) – or £650,000 per couple if other exemptions cannot be applied. Parents and grandparents can leave property worth up to £850,000 to their children without them having to pay IHT. This figure will rise to £1 million by 2020. The current allowance of £325,000 remains unchanged, but a new tax-free band worth £175,000 per person on your main residence will be added to the £325,000, making it £500,000 per person. The new tax-free band was set at £125,000 in 2018, eventually rising to £175,000 in 2020.

### **STEPS TO MITIGATE AGAINST IHT**

#### **1. MAKE A WILL**

Dying intestate (without a Will) means that you may not be making the most of the IHT exemption that exists if you wish your estate to pass to your spouse or registered civil partner. For example, if you don’t make a Will, then relatives other than your spouse or registered civil partner may be entitled to a share of your estate – and this might trigger an IHT liability.

#### **2. MAKE LIFETIME GIFTS**

Gifts made more than seven years before the donor dies to an individual or to a bare trust are free of IHT. So, if appropriate, it could be wise to pass on some of your wealth while you are still alive. This may reduce the value of your estate when it is assessed for IHT purposes, and there is no limit on the sums you can



pass on. You can gift as much as you wish, and this is known as a 'Potentially Exempt Transfer' (PET). However, there is a catch: if you live for seven years after making such a gift, then it will be exempt from IHT. But should you be unfortunate enough to die within seven years, it will still be counted as part of your estate if it is above the annual gift allowance. You need to be particularly careful if you are giving away your home to your children with conditions attached to it, or if you give it away but continue to benefit from it. This is known as a 'Gift with Reservation of Benefit'.

### 3. LEAVE A PROPORTION TO CHARITY

Being generous to your favourite charity can reduce your tax bill. If you leave at least 10% of your estate to a charity or number of charities, then your IHT liability on the taxable portion of the estate is reduced to 36% rather than 40%.

### 4. SET UP A TRUST

Family trusts can be useful as a way of reducing IHT, making provision for your children and spouse, and potentially protecting family businesses. Trusts enable the donor to control who benefits (the beneficiaries) and under what circumstances, sometimes long after the donor's death. Compare this with making a direct gift (for example, to a child), which offers no control to the donor once given. When you set up a trust, it is a legal arrangement, and you will need to appoint 'trustees' who are responsible for holding and managing the assets. Trustees have a responsibility to manage the trust on behalf of and in the best interest of the beneficiaries, in accordance with the trust terms. The terms will be set out in a legal document called 'the trust deed'.

#### TYPES OF TRUST

There are now three main types of trust.

Bare (Absolute) trusts – with a bare trust, you name the beneficiaries at outset and these can't be changed. The assets, both income and capital, are immediately owned and can be taken by the beneficiary at age 18 (16 in Scotland).

Interest in possession trusts – with this type of trust, the beneficiaries have a right to all the income from the trust, but not necessarily the capital. Sometimes, a different beneficiary will get the capital – say, on the death of the income beneficiary. They're often set up under the terms of a Will to allow a spouse to

benefit from the income during their lifetime but with the capital being owned by their children. The capital is distributed on the remaining parent's death.

Discretionary trusts – here, the trustees decide what happens to the income and capital throughout the lifetime of the trust and how it is paid out. There is usually a wide range of beneficiaries, but no specific beneficiary has the right to income from the trust. A few trusts will now have to pay an IHT charge when they are set up, at ten-yearly intervals and even when assets are distributed

## **IMPROVING YOUR RETIREMENT INCOME**

Retirement is a time for you to do the things you've always wanted to do. Perhaps you're looking forward to having more time to explore faraway places. Or maybe you dream of simply waking up each day and doing whatever takes your fancy. However you see your future, it helps to start planning for it as soon as possible. The ways that you can take your pension savings changed in April 2015, giving you more choice over how you can access and use the money you've saved up. Deciding what to do with your pension is a big decision. To help you in your planning, here are some tips that could help you increase the money you have available in retirement.

### **MAKE SURE YOU HAVE DETAILS FOR ALL YOUR PENSION POTS**

Locate pension pots that you may have forgotten about. The Pension Advisory Service and the Pension Tracing Service can help you to trace forgotten pension pots. Remember to take your State Pension into account. Find out more about your State Pension, including what you might be entitled to and how to claim, on the gov.uk website.

### **CONSIDER TOPPING UP YOUR PENSIONS**

Think about topping up your pension in the years leading up to your retirement. That little bit extra could make a difference. Remember: you might be eligible to top up your State Pension too. This could be particularly beneficial if you're self-employed or a woman, because it's possible your State Pension entitlement may be low. From age 55, you can draw your pension savings as and when you need them and still pay into your pension. You'll continue to receive tax relief on your payments up to age 75, although taking benefits flexibly will limit how much you can put in.

## CONSIDER RETIRING A LITTLE LATER THAN YOU'D ORIGINALLY PLANNED

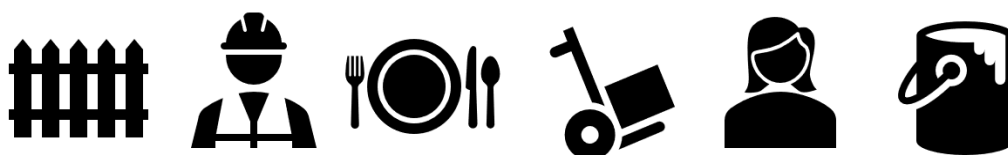
Delaying your retirement might give your pension fund more chance to grow. Remember, though, if your pension fund remains invested, the value could go down as well up, and you may not get back what you put in. If you defer your retirement, it's also important to check whether this will affect any state benefits you're entitled to. Working part-time for a while after you finish full-time work might enable you to delay drawing money from your State Pension or your pension, meaning your money may last longer when you do retire. Maybe you fancy trying something new, like setting up your own business. Becoming your own boss could be a good way to stay active and keep earning.

## PLAN FOR THE RETIREMENT YOU WANT

As well as deciding what to do with your pension, there are other things to think about when it comes to making sure you have the retirement lifestyle you want.

DGS are Independent, whole of market and Chartered Financial Advisers. I am also a Chartered Financial Planner with over 20 years financial services experience, so you are in safe hands. For a free review of your current plans and financial situation, please contact me, Paul Savuto, AFPS, Chartered Financial Planner. DGS Independent Financial Advisers Ltd. 07834 499595 or email [ps@dgsifa.com](mailto:ps@dgsifa.com), I'll be happy to talk to you and answer any questions you have. FCA 225814.

### Let's Hear It For The Advertisers!



When it comes to looking for good local services, tradespeople and businesses – look first in The Meppershall Messenger. We are proud to carry advertising from a range of local contacts supplying a wide variety of goods and services in our area and **who are often part of the community**. Why not try them out? ***Take a moment NOW to look through the useful ads in the centre section and also in the colour section.***

### **Joyce Smith – celebrating her career with The Meppershall Messenger!**

Next year marks 30 years of living in Meppershall for Joyce Smith. Since then, in her retirement here, she has made a big contribution to The Meppershall Messenger. We want to say a big thank you to Joyce and share some of her thoughts, here.

As soon as she arrived, she knew she wanted to get involved in community life. Besides the church, The Messenger was the perfect opportunity. Along with Edward her husband, Joyce was soon helping with printing, collating and delivering the magazine. She was welcomed into the team by Dorothy Morris, founder and editor for many years. Edward sadly passed away in 2000 but the work on our much-loved village magazine continued to be important to Joyce.

In the 90s The Messenger circulated to just 400 houses and it was often produced on a dining table in somebody's house. Peter and Shireen Longland, as well as Archie Russell, the Billiard Room at the Old Village Hall, the upstairs room at the Post Office, the Methodist Chapel and of course The Sugar Loaf... they have all hosted parts of The Meppershall Messenger production process. Joyce was usually there, often teaming up with Barbara and Maurice Horwood. She only gave up her delivery round on Fildyke road as she approached her 90<sup>th</sup> birthday. Now 90, she is also taking this opportunity to retire from the production team – which is a respectable decision!

Joyce says Messenger meetings were always a social occasion - a chance to get together. "I like meeting people," says Joyce. "They say I know everyone – but I just like to say hello to people! I've made a lot of friends that way in the village." Archie Russell or John Parsons were known to hold fundraising garden parties and drinks and nibbles were often provided for the volunteers of an evening at Dorothy's.

"The Messenger has always been there to tell you what's going on in the village," explains Joyce. She recalls one of her favourite issues of the magazine, which commemorated a village hall party marking the 50<sup>th</sup> Anniversary of Victory in Europe (VE) day - a major anniversary in village life. It was back in the days when the Meppershall Women's Institute (WI) played a leading role in such events.

Joyce let us snap her showing off the souvenir apron from that occasion – see opposite – and it turned our minds to next year's major 75<sup>th</sup> anniversary and what are sure to be big events in Meppershall again at that time.

Joyce's retirement here is a long way from her early years living at Old Street in London and walking to work at Barclays in the city. Her mother was one of ten children and the whole family lived nearby in the same district of the city. She remembers well the sound of the 'doodle bugs' – flying bombs – coming over during the Second World War at a time when her father was serving in the RAF. Her family did not have access to an underground shelter but used one of many brick shelters constructed in the streets near the flats where she lived. She was evacuated to Ely at the age of 11 and just a few years later she started work, on her 14<sup>th</sup> birthday, in the stock department at C&A – the chain of clothes shops.

After raising a family first in London and later in Hertfordshire, she has become a much-loved part of the community here. We are so very grateful for all your hard work and volunteering for The Meppershall Messenger, Joyce. Thank you!





*In this picture Joyce is sporting her souvenir apron from the 1995 celebrations of VE Day's 50<sup>th</sup> Anniversary. It's a reminder of one of her favourite issues of The Meppershall Messenger which commemorated that special occasion. As the news of the 2020 Bank Holiday sinks in (rescheduled! See editorial!), the village will be starting to plan its very special weekend of activities during the anniversary, 8<sup>th</sup>-10<sup>th</sup> May 2020.*





The wet weather has been helpful to us at The Eco Lodges; all the saplings that have been planted are very thirsty and it has helped successfully move them to different areas of the site. Summer is a busy time of year for us as there is always a lot to do outdoors, from planting and maintaining the edible & useful plant areas to grass seeding & cutting and moving native plants to new areas. If you enjoy being outside and meeting people, we would love to hear from you – volunteer with us at times and days to suit you for as much or as little time as you would like. If gardening isn't your thing perhaps DIY, history or baking is. Clophill Heritage Trust could not operate without our volunteers and we are a friendly group! Come along and see for yourself.

Next month we will have a new event at The Eco Lodges; The Battle of Broadway. This will be an outdoor performance by some very talented ladies and promises to be side-splittingly funny. Think The West End meets The Comedy Club! Book early as tickets are limited. For a full list of events and to book please see [www.clophillecolodges.co.uk/events](http://www.clophillecolodges.co.uk/events) or call us on 07935 911207.

With summer here (and hopefully the sun as well), you might be thinking about family gatherings – remember you can hire The Eco Lodges for events and parties as well as accommodation, perfect for a BBQ or birthday! Contact us for more information.

#### Next Events:

04	Sun Aug	Guided Walk - Medicinal & Edibles Pl...
25	Sun Aug	Sunday Brunch & Teas
25	Sun Aug	Guided Walk - Medicinal & Edible Pla...
30	Fri Aug	The Battle of Broadway!

**Summerfield Miniature Railway**  
**Bedford Model Engineering Society**  
**Off the A600 just past Haynes Turn**  
**Public Running Days in 2019 from 10.30 AM to 4 PM**

MARCH	Sunday 31 <sup>st</sup>	AUGUST	Wednesday 7 <sup>th</sup> *
APRIL	Wednesday 10 <sup>th</sup> (half term) *		Wednesday 14 <sup>th</sup> *
	Sunday 21 <sup>st</sup>		Sunday 25 <sup>th</sup>
	Monday 22 <sup>nd</sup>		Monday 26 <sup>th</sup> (Bank Holiday)
	Sunday 5 <sup>th</sup>	SEPTEMBER	Sunday 1 <sup>st</sup>
MAY	Monday 6 <sup>th</sup> (Bank Holiday)		Sunday 22 <sup>nd</sup>
	Sunday 26 <sup>th</sup>	OCTOBER	Sunday 13 <sup>th</sup>
	Monday 27 <sup>th</sup> (Bank Holiday)		Wednesday 23 <sup>rd</sup> (half term) *
	Wednesday 29 <sup>th</sup> (half term) *		Sunday 27 <sup>th</sup>
JUNE	Sunday 9 <sup>th</sup>	DECEMBER	SANTA SPECIALS
	Sunday 23 <sup>rd</sup>		PRE-BOOKING ESSENTIAL:
JULY	Sunday 7 <sup>th</sup>		
	Sunday 21 <sup>st</sup>	NB	Booking for Santa Specials opens on Sept 1 <sup>st</sup> and places sell out very quickly  For further information on any event, see our website: <a href="http://www.bedfordmes.co.uk">www.bedfordmes.co.uk</a>
	Wednesday 24 <sup>th</sup> *		
	Wednesday 31 <sup>st</sup> *		
*On our Wednesday openings, only limited catering will be available.			

## The Team

### CONTRIBUTIONS

The Editors welcome contributions to the Messenger, whether as letters, articles or notices. Contributions should preferably be as attachments to e-mail (address below) but handwritten contributions may be sent by post, or left in the folder kept at the Village Stores. Contributions should run to not more than one A5 page (except by prior arrangement) and should be received by the Editors not later than the 12<sup>th</sup> of the month for publication at the end of that month. Contributions received after the deadline may be held over.

### DISCLAIMER

The Editors reserve the right to omit or alter any advertisement or article and to change the content, format or issue date of the magazine without prior notice. The Editors cannot be held responsible for the factual correctness of, or for any libellous comment or statement made in any advertisement, article or other contribution published in this magazine. Every effort will be made to avoid any deliberate attempt to mislead or otherwise cause harm or damage to any person or persons by any advertisement, article or any other contribution published in this magazine.

### THE TEAM

Joint Editors	James Read & Mick Ridley	Email: <a href="mailto:mepp.messenger@gmail.com">mepp.messenger@gmail.com</a>	
Assistant Editor	Vacancy		
Advertising	Andrew Pain	26 Fildyke Road <a href="mailto:andrewgpain@hotmail.com">andrewgpain@hotmail.com</a>	07875 580069
Distribution	Colette House	90 Fildyke Road Email: <a href="mailto:colettehouse@gmail.com">colettehouse@gmail.com</a>	815585
Production	Enid Pamment	112 High Street Email: <a href="mailto:enid.pamment@gmail.com">enid.pamment@gmail.com</a>	851397
Co-ordination			
Treasurer	John Thompson	16 Brookmead Email: <a href="mailto:meppershallmessenger@meppershall.org">meppershallmessenger@meppershall.org</a>	812983

Collating Dates - 2019			
July Issue	July 1	November	October 28
Aug/Sept	July 29	December	December 2
October	September 30	February 2020	January 27

***Please note that dates in the above table show when collating will take place, at 2.30 pm in the Sugar Loaf, for the corresponding month, displayed to the left. The issue being collated usually relates to the following month.***